

(KRITR5.KRITR) 19003

KRITR FIVE DEPARTURE (RNAV)

ROCK HILL/YORK COUNTY/BRYANT FIELD (UZA)

AL-5361 (FAA)

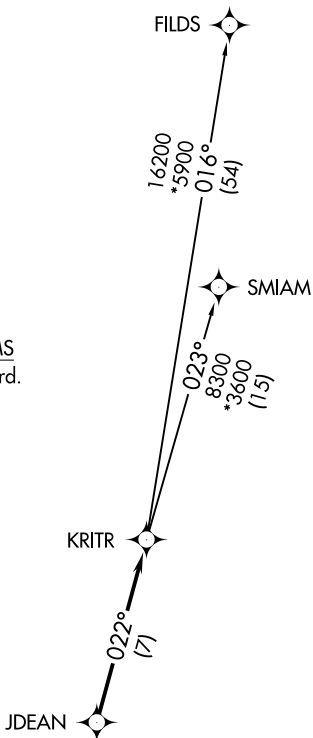
ROCK HILL, SOUTH CAROLINA

ASOS
120.775
CLNC DEL
126.85
UNICOM
123.05 (CTAF)
CHARLOTTE DEP CON
120.05 307.8

**TOP ALTITUDE:
3000**

TAKEOFF MINIMUMS

Rwys 2, 20: Standard.



- NOTE: For turbojets only.
- NOTE: DME/DME/IRU or GPS required.
- NOTE: RNAV 1.
- NOTE: RADAR required.
- NOTE: If unable to accept climb rates, advise ATC on initial contact.
- NOTE: Upon reaching 10000 MSL, accelerate to and maintain 280K, if unable advise ATC.

NOTE: Chart not to scale.



DEPARTURE ROUTE DESCRIPTION

Climb on heading assigned by ATC, expect RADAR vectors to JDEAN, then on track 022° to KRITR, then on assigned transition. Maintain 3000, expect filed altitude within 10 minutes after departure.

FILDS TRANSITION (KRITR5.FILDS)

SMIAM TRANSITION (KRITR5.SMIAM)

KRITR FIVE DEPARTURE (RNAV)

(KRITR5.KRITR) 03JAN19

ROCK HILL, SOUTH CAROLINA
ROCK HILL/YORK COUNTY/BRYANT FIELD (UZA)

SE-2, 16 JUL 2020 to 13 AUG 2020

SE-2, 16 JUL 2020 to 13 AUG 2020