

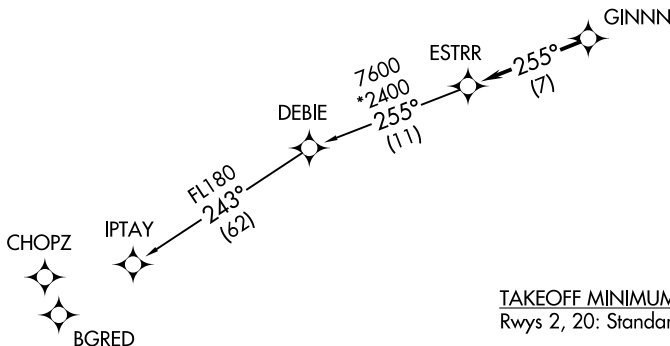
(ESTRR4.ESTRR) 19003

ESTRR FOUR DEPARTURE (RNAV)

ROCK HILL/YORK COUNTY/BRYANT FIELD (UZA)
AL-5361 (FAA) ROCK HILL, SOUTH CAROLINA

**TOP ALTITUDE:
3000**

ASOS 120.775
CLNC DEL 126.85
UNICOM (CTAF) 123.05
CHARLOTTE DEP CON 120.05 307.8



TAKEOFF MINIMUMS
Rwys 2, 20: Standard.

- NOTE: For turbojets only.
- NOTE: DME/DME/IRU or GPS required.
- NOTE: RNAV 1.
- NOTE: RADAR required.
- NOTE: If unable to accept climb rates, advise ATC on initial contact.
- NOTE: Upon reaching 10000 MSL, accelerate to and maintain 280K, if unable advise ATC.

NOTE: Chart not to scale.



DEPARTURE ROUTE DESCRIPTION

Climb on heading assigned by ATC, expect RADAR vectors to GINNN, then on track 255° to ESTRR, then on IPTAY transition. Maintain 3000, expect clearance to filed altitude within 10 minutes after departure.

IPTAY TRANSITION (ESTRR4.IPTAY)

ESTRR FOUR DEPARTURE (RNAV)
(ESTRR4.ESTRR) 03JAN19

ROCK HILL, SOUTH CAROLINA
ROCK HILL/YORK COUNTY/BRYANT FIELD (UZA)

SE-2, 16 JUL 2020 to 13 AUG 2020

SE-2, 16 JUL 2020 to 13 AUG 2020