

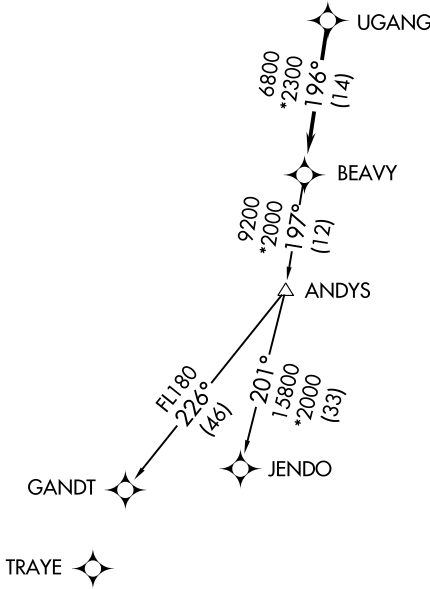
(BEAVY5.BEAVY) 19003

# BEAVY FIVE DEPARTURE (RNAV)

ROCK HILL/YORK COUNTY/BRYANT FIELD (UZA)  
AL-5361 (FAA) ROCK HILL, SOUTH CAROLINA

ASOS  
120.775  
CLNC DEL  
126.85  
UNICOM  
123.05 (CTAF)  
CHARLOTTE DEP CON  
120.05 307.8

**TOP ALTITUDE:  
3000**



**TAKEOFF MINIMUMS**  
Rwys 2, 20: Standard.

- NOTE: For turbojets only.
- NOTE: DME/DME/IRU or GPS required.
- NOTE: RNAV 1.
- NOTE: RADAR required.
- NOTE: If unable to accept climb rates, advise ATC on initial contact.
- NOTE: Upon reaching 10000 MSL, accelerate to and maintain 280K, if unable advise ATC.
- NOTE: Transponder code will be issued via PDC or Charlotte CLNC DEL.

NOTE: Chart not to scale.

## DEPARTURE ROUTE DESCRIPTION

Climb on heading assigned by ATC, expect RADAR vectors to UGANG, then on track 196° to BEAVY. Then on assigned transition. Maintain 3000, expect clearance to filed altitude within 10 minutes after departure.

GANDT TRANSITION (BEAVY5.GANDT)  
JENDO TRANSITION (BEAVY5.JENDO)

**BEAVY FIVE DEPARTURE (RNAV)**  
(BEAVY5.BEAVY) 03JAN19

ROCK HILL, SOUTH CAROLINA  
ROCK HILL/YORK COUNTY/BRYANT FIELD (UZA)

SE-2, 16 JUL 2020 to 13 AUG 2020

SE-2, 16 JUL 2020 to 13 AUG 2020