

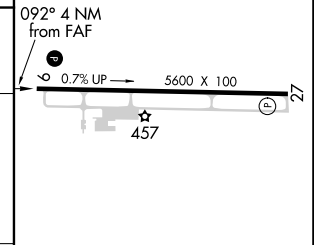
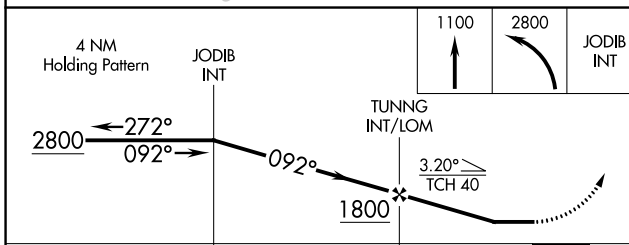
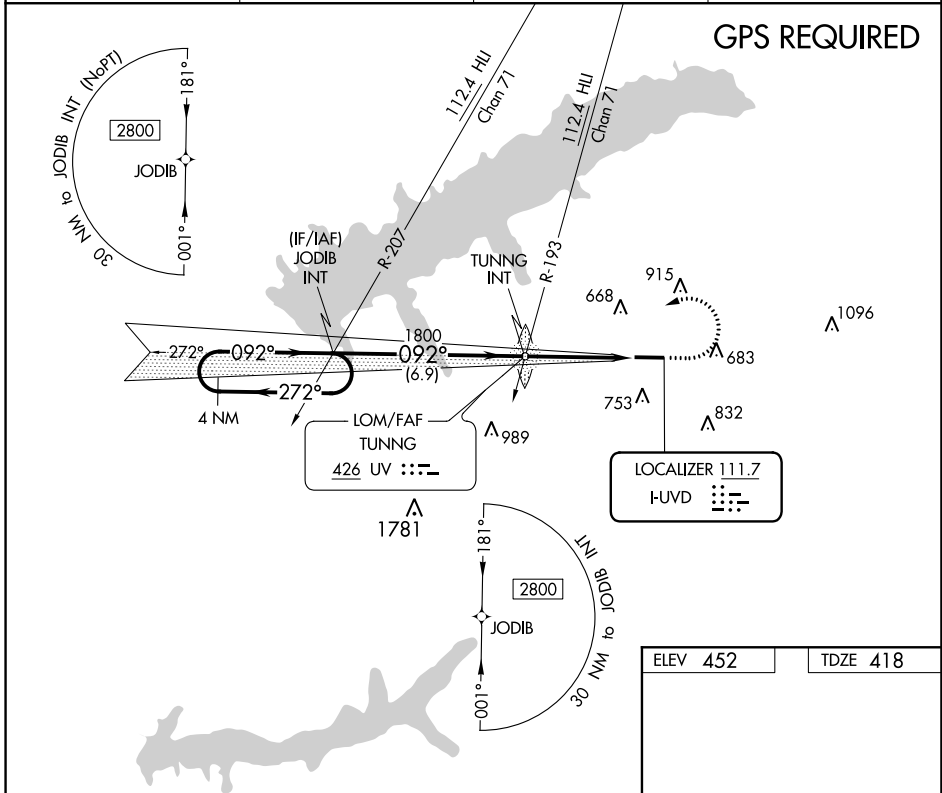
LOC I-UVD <b>111.7</b>	APP CRS <b>092°</b>	Rwy Idg TDZE Apt Elev	<b>5600</b> <b>418</b> <b>452</b>
---------------------------	------------------------	-----------------------------	---

**LOC Y RWY 9**  
UNIVERSITY-OXFORD (UOX)

**GPS required.** When local altimeter setting not received, use Olive Branch altimeter setting and increase all MDA 100 feet; increase S-LOC Cats C, D visibility 3/8 mile, and Circling Cat C visibility 1/4 mile.

**MISSED APPROACH:** Climb to 1100 then climbing left turn to 2800 direct JODIB INT and hold.

AWOS-3PT <b>132.725</b>	MEMPHIS CENTER <b>128.5 381.4</b>	GCO <b>135.075</b>	UNICOM <b>123.0 (CTAF)</b>
----------------------------	--------------------------------------	-----------------------	-------------------------------



CATEGORY	A	B	C	D
S-LOC 9	920-1	502 (500-1)	920-1 3/8	502 (500-1 3/8)
<b>CIRCLING</b>	980-1 528 (600-1)	1060-1 608 (700-1)	1380-2 3/4 928 (1000-2 3/4)	1380-3 928 (1000-3)

ELEV	452	TDZE	418
MIRL Rwy 9-27 <b>0</b> REIL Rwy 27			
FAF to MAP 4 NM			
Knots	60	90	120 150 180
Min:Sec	4:00	2:40	2:00 1:36 1:20

SC-4, 16 JUL 2020 to 13 AUG 2020

SC-4, 16 JUL 2020 to 13 AUG 2020