

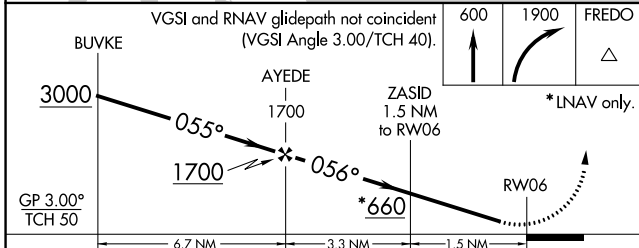
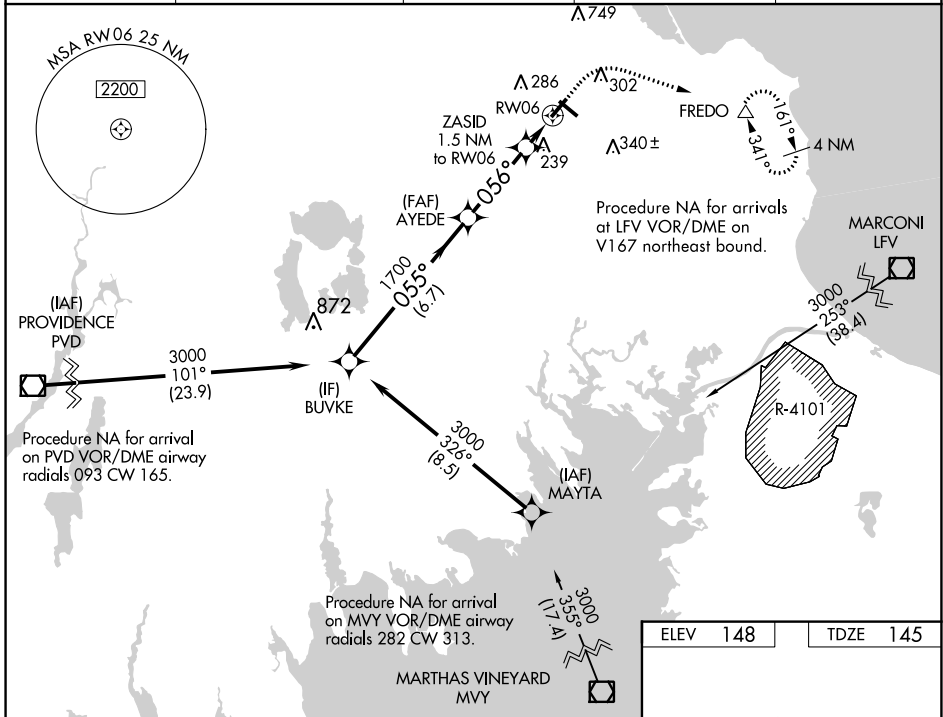
WAAS CH 40422 W06A	APP CRS 056°	Rwy Idg 4350 TDZE 145 Apt Elev 148
--	------------------------	---

RNAV (GPS) RWY 6

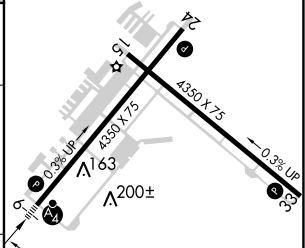
PLYMOUTH MUNI (PYM)

RNP APCH.	MALSF	MISSED APPROACH: Climb to 600 then climbing right turn to 1900 direct FREDO and hold.
<p>▼ Circling Rwy 15 NA at night. Rwy 6 helicopter visibility reduction below $\frac{3}{4}$ SM NA. For uncompensated Baro-VNAV systems, LNAV/VNAV NA below -17°C (2°F) or above 54°C (130°F). Inop table does not apply to LPV. For inop ALS, increase LNAV/VNAV all Cats visibility to $\frac{1}{2}$ SM.</p>		

ASOS 135.625	BOSTON APP CON 118.2 284.6	CLNC DEL 127.75	UNICOM 122.725 (CTAF)	122.9
------------------------	--------------------------------------	---------------------------	---------------------------------	--------------



ELEV	148	TDZE	145
------	-----	------	-----



	A	B	C	D
LPV DA	345- $\frac{3}{4}$	200 (200- $\frac{3}{4}$)		NA
LNAV/VNAV DA	426- $\frac{3}{4}$	281 (300- $\frac{3}{4}$)		NA
LNAV MDA	500- $\frac{3}{4}$	355 (400- $\frac{3}{4}$)		NA
C CIRCLING	620-1 472 (500-1)	640-1 492 (500-1)	740-1 $\frac{1}{2}$ 592 (600-1 $\frac{1}{2}$)	NA

REIL Rwy 24
MIRL Rwy 6-24 and 15-33

NE-1, 16 JUL 2020 to 13 AUG 2020

NE-1, 16 JUL 2020 to 13 AUG 2020