

WAAS CH 58022 W22A	APP CRS 223°	Rwy Idg TDZE Apt Elev	4418 172 172
--	------------------------	-----------------------------	---

RNAV (GPS) RWY 22

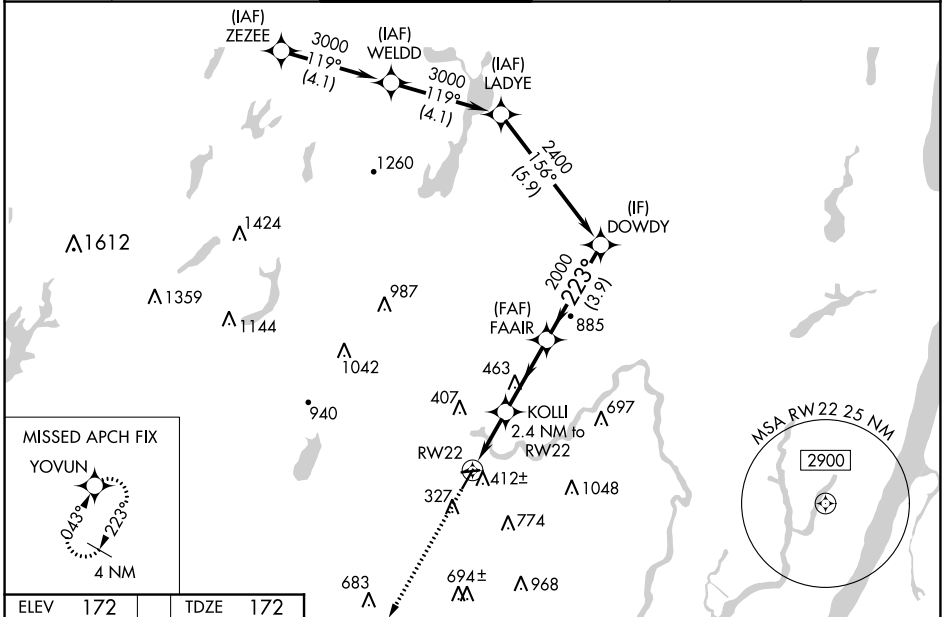
ESSEX COUNTY (CDW)

RNP APCH.

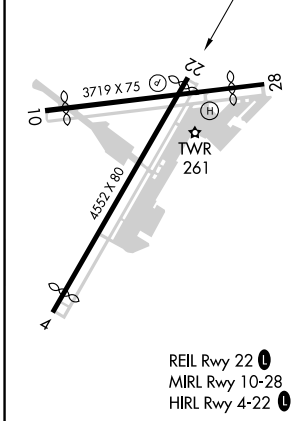
▼ Rwy 22 helicopter visibility reduction below 1 SM NA. Baro-VNAV NA when using Newark altimeter setting. For uncompensated Baro-VNAV systems, LNAV/VNAV NA below -15°C or above 54°C. When local altimeter setting not received, use Newark altimeter setting and increase all DA 50 feet and all MDA 60 feet; increase LNAV/VNAV all Cats and LNAV Cat C and Circling Cats A and C visibility ¼ mile. Circling Rwy 4, 10, 28 NA at night.

MISSED APPROACH:
Climb to 2000 direct
YOVUN and hold.

ATIS 135.5	NEW YORK APP CON 127.6 379.9	CALDWELL TOWER * 119.8 (CTAF) 0	GND CON 121.9	CLNC DEL 121.1	UNICOM 122.95
----------------------	--	---	-------------------------	--------------------------	-------------------------

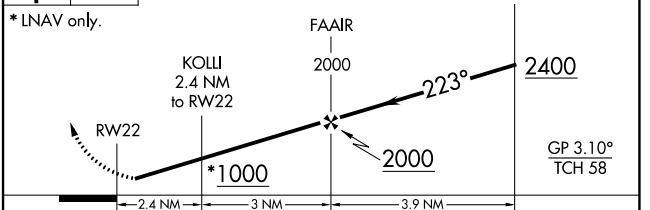


ELEV 172	TDZE 172
----------	----------



2000 YOYUN VGSI and descent angles not coincident (VGSI Angle 3.00/TCH 42).

* LNAV only.



CATEGORY	A	B	C	D
LPV DA	459-1	287 (300-1)		NA
LNAV/VNAV DA	610-1 ³ / ₈	438 (500-1 ³ / ₈)		NA
LNAV MDA	680-1	508 (600-1)	680-1 ³ / ₈ 508 (600-1 ³ / ₈)	NA
CIRCLING	960-1	1040-2	1100-2 ³ / ₄	NA
	788 (800-1)	868 (900-2)	928 (1000-2 ³ / ₄)	

NE-2, 16 JUL 2020 to 13 AUG 2020

NE-2, 16 JUL 2020 to 13 AUG 2020