

VOR/DME ETX 110.2 Chan 39	APP CRS 103°	Rwy Idg TDZE Apt Elev	N/A N/A 399
---	------------------------	-----------------------------	--

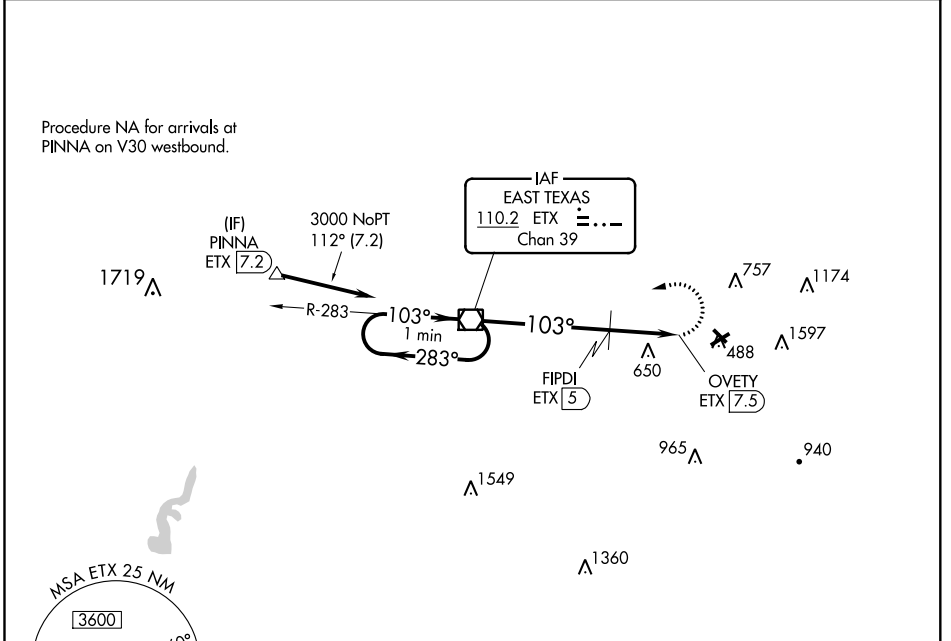
VOR-B

ALLENTOWN QUEEN CITY MUNI (XLL)

⚠ Night landing: Rwy 15, 25, 33 NA at night. When local altimeter setting not received, use Lehigh Valley Intl altimeter setting and increase all MDA 20 feet; increase Circling Cat C visibility ¼ mile. Circling NA south of Rws 7 and 25.

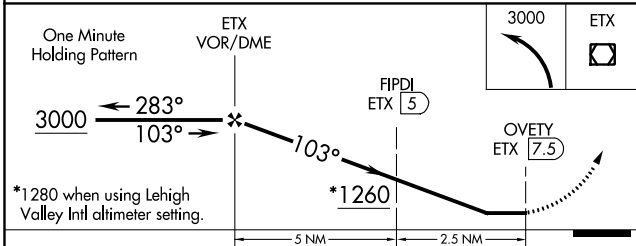
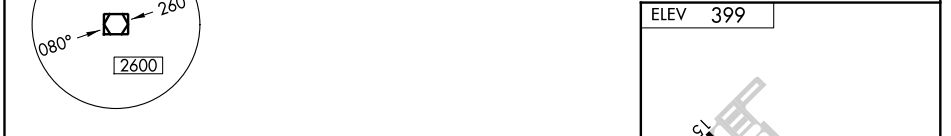
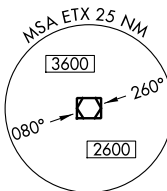
⚠ MISSED APPROACH: Climbing left turn to 3000 direct ETX VOR/DME and hold.

AWOS-3 127.875	ALLENTOWN APP CON 119.65 124.45 351.8	CLNC DEL 118.9	UNICOM 122.7 (CTAF) ①
--------------------------	---	--------------------------	---------------------------------



NE-4, 16 JUL 2020 to 13 AUG 2020

NE-4, 16 JUL 2020 to 13 AUG 2020



CATEGORY	A	B	C	D
CIRCLING	1260-1½	861 (900-1½)	1260-2½ 861 (900-2½)	NA
FIPDI FIX MINIMUMS				
CIRCLING	1000-1½	601 (700-1½)	1000-1¾ 601 (700-1¾)	NA

MIRL Rws 7-25 and 15-33 ①					
REIL Rws 7 and 25 ①					
FAF to MAP 7.5 NM					
Knots	60	90	120	150	180
Min:Sec	7:30	5:00	3:45	3:00	2:30