

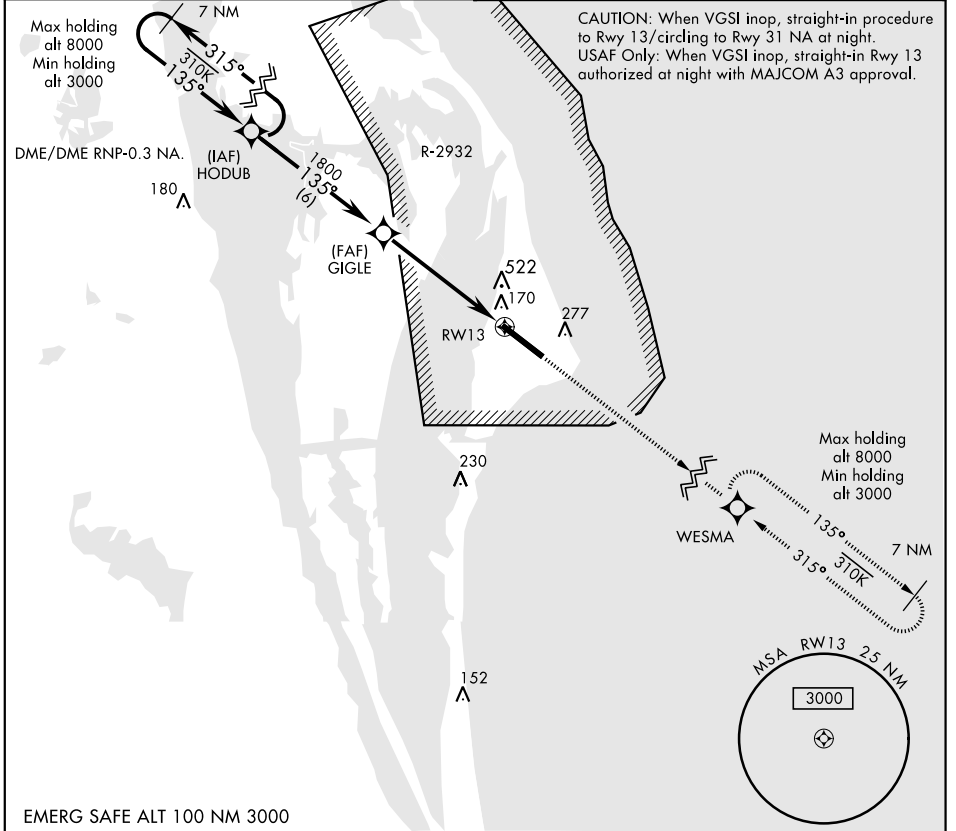
# RNAV (GPS) RWY 13

|          |            |        |
|----------|------------|--------|
| APCH CRS | Rwy ldg    | 10,000 |
| 135°     | TDZE       | 10     |
|          | Arprt Elev | 10     |

AL-5157 [USAF] CAPE CANAVERAL AFS SKID STRIP (KXMR)

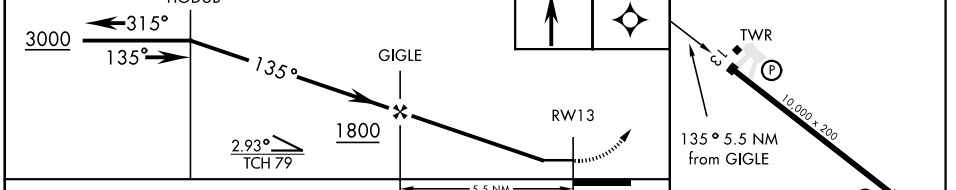
**⚠** \* Circling not authorized NE of Rwy 13-31. MISSED APPROACH: Climb to 3000 direct WESMA and hold.

ORLANDO APP CON **134.95 281.425** CAPE TOWER ★ **118.625 143.15 239.05**



CAUTION: When VGSI inop, straight-in procedure to Rwy 13/circling to Rwy 31 NA at night.  
USAF Only: When VGSI inop, straight-in Rwy 13 authorized at night with MAJCOM A3 approval.

EMERG SAFE ALT 100 NM 3000



| CATEGORY   | A     | B           | C                      | D                    | E                      |
|------------|-------|-------------|------------------------|----------------------|------------------------|
| LNAV MDA   | 540-1 | 530 (600-1) | 540-1½                 | 530 (600-1½)         |                        |
| CIRCLING * | 580-1 | 570 (600-1) | 580-1½<br>570 (600-1½) | 620-2<br>610 (700-2) | 640-2¼<br>630 (700-2¼) |

ELEV 10 TDZE 10

HIRL Rwy 13-31

# RNAV (GPS) RWY 13

SE-3, 16 JUL 2020 to 13 AUG 2020

SE-3, 16 JUL 2020 to 13 AUG 2020