

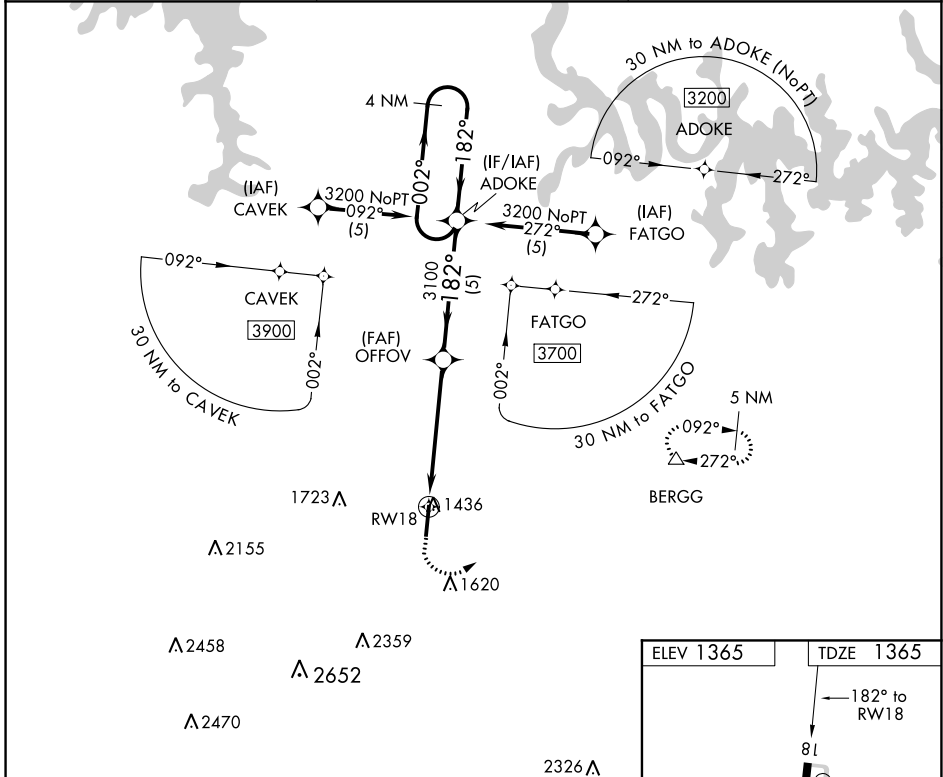
APP CRS	Rwy ldg	6161
182°	TDZE	1365
	Apt Elev	1365

RNAV (GPS) RWY 18

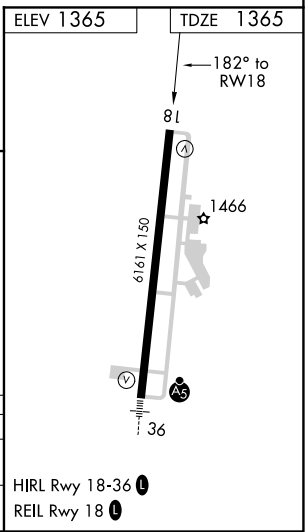
BOONE COUNTY (HRO)

RNP Apx.	MISSED APPROACH: Climb to 1800 then climbing left turn to 3200 direct BERGG and hold.
▽ Rwy 18 helicopter visibility reduction below 3/4 SM NA.	

ASOS 121.125	MEMPHIS CENTER 126.85 281.55	UNICOM 123.0 (CTAF) 0
------------------------	----------------------------------------	---------------------------------



1800	3200	BERGG	VGSI and descent angles not coincident (VGSI Angle 3.00/TCH 50).			
		△	4 NM Holding Pattern			
		OFFOV	ADOKE			
			3200			
CATEGORY	A	B	C	D		
LNVA MDA	1720-1		355 (400-1)			
CIRCLING	1780-1 415 (500-1)	1820-1 455 (500-1)	1820-1½ 455 (500-1½)	1920-2 555 (600-2)		



SC-1, 16 JUL 2020 to 13 AUG 2020

SC-1, 16 JUL 2020 to 13 AUG 2020