

LOC/DME I-HRO 111.7 Chan 54	APP CRS 359°	Rwy Idg TDZE 1351 Apt Elev 1365	6161
---	------------------------	---	-------------

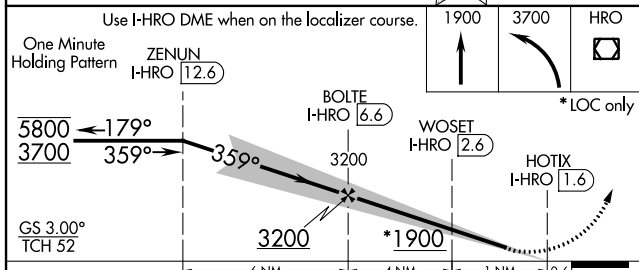
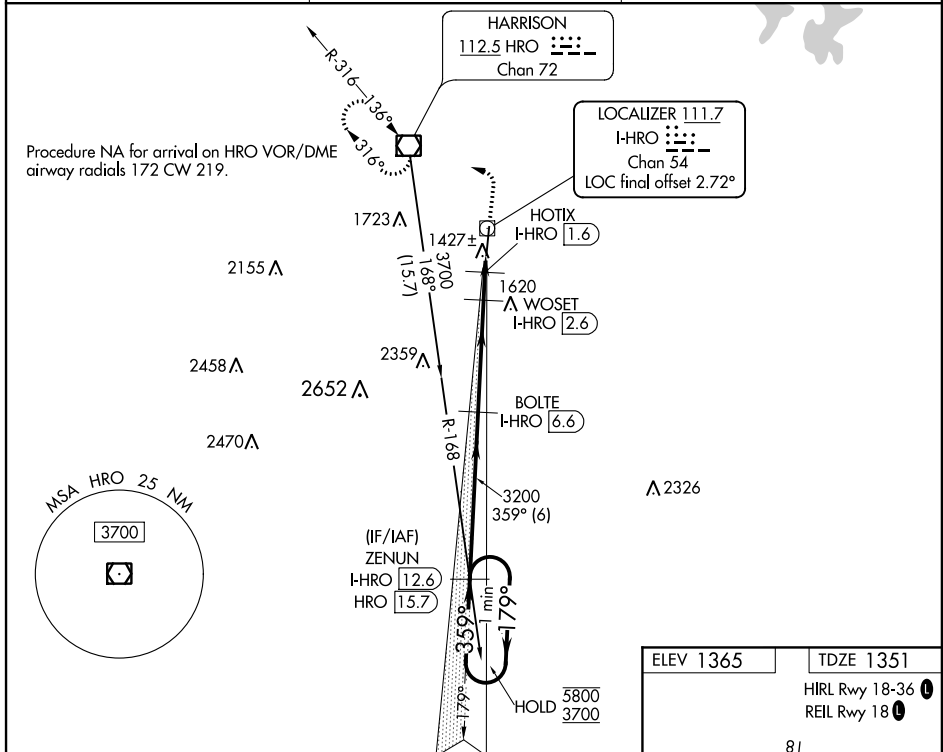
ILS or LOC RWY 36

BOONE COUNTY (HRO)

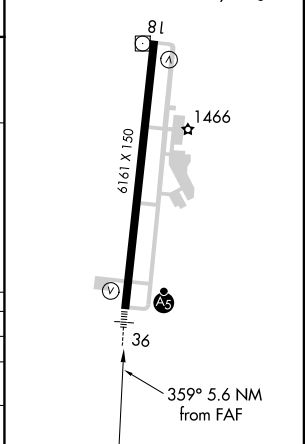
DME required for LOC only. DME or RADAR required for procedure entry.

MALSRL MISSED APPROACH: Climb to 1900 then climbing left turn to 3700 direct HRO VOR/DME and hold, continue climb-in hold to 3700.

ASOS 121.125	MEMPHIS CENTER 126.85 281.55	UNICOM 123.0 (CTAF)
------------------------	--	-------------------------------



ELEV 1365	TDZE 1351
HIRL Rwy 18-36	REIL Rwy 18



CATEGORY	A	B	C	D
S-ILS 36		1601-1/2	250 (300-1/2)	
S-LOC 36		1680-1/2	329 (400-1/2)	
CIRCLING	1840-1 475 (500-1)	1860-1 495 (500-1)	2340-3 975 (1000-3)	2560-3 1195 (1200-3)

SC-1, 16 JUL 2020 to 13 AUG 2020

SC-1, 16 JUL 2020 to 13 AUG 2020