

LOC I-JAN 110.5	APP CRS 159°	Rwy ldg TDZE Apt Elev	8500 312 346
---------------------------	------------------------	-----------------------------	---

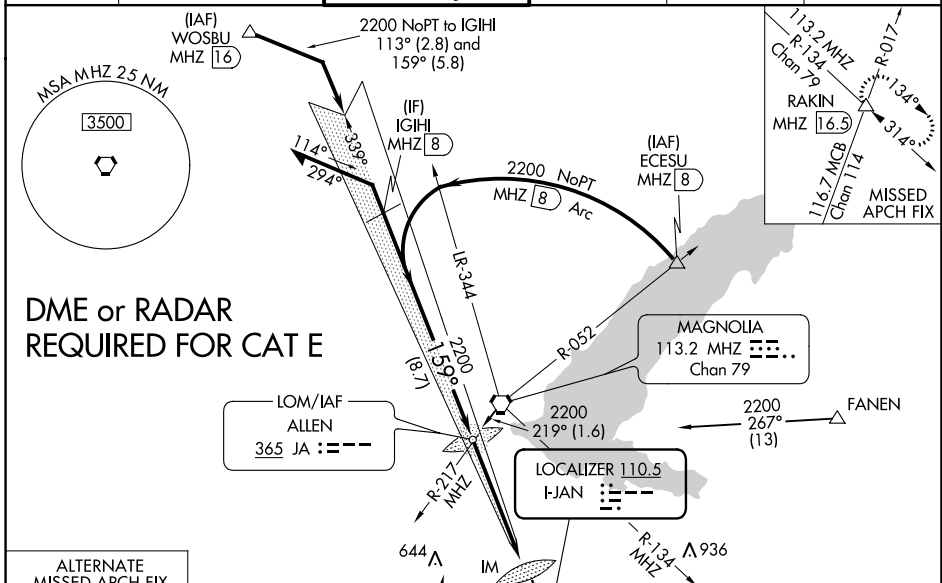
ILS or LOC RWY 16L

JACKSON-MEDGAR WILEY EVERS INTL (JAN)

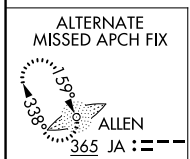
ASR Circling NA for Cat E southwest of Rwy 16R-34L. When local altimeter setting not received, use Hawkins Field altimeter setting and increase all DA 19 feet and all MDA 20 feet. For inop ALS, increase S-ILS 16L Cat E visibility to RVR 4000 and increase S-LOC 16L Cats C/D/E visibility to 1 3/8 SM. For inop ALS when using Hawkins Field altimeter setting, increase S-ILS 16L Cat E visibility to RVR 4000 and increase S-LOC 16L Cats C/D/E visibility to 1 1/2 SM. Procedure turn NA for Cat E.

ALSF-2 MISSED APPROACH: Climb to 800 then climbing left turn to 3000 on heading 090° and MHZ VORTAC R-134 to RAKIN INT/16.5 DME and hold.

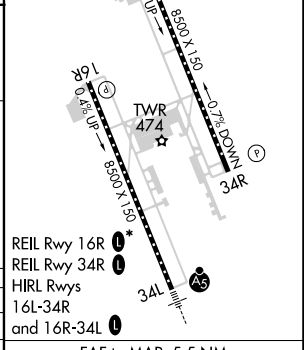
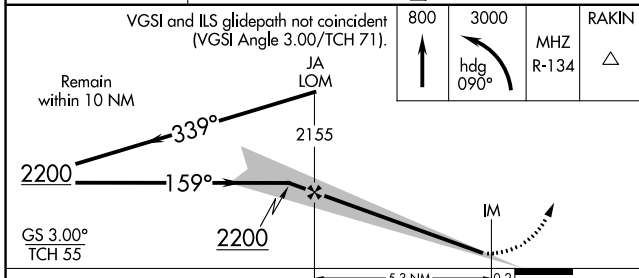
ATIS 121.05	JACKSON APP CON* 123.9 317.7	JACKSON TOWER* 120.9 (CTAF) 0 352.0	GND CON 121.7 348.6	120.7 0*	UNICOM 122.95
-----------------------	--	---	-------------------------------	-----------------	-------------------------



DME or RADAR REQUIRED FOR CAT E



ELEV	346	TDZE	312
------	-----	------	-----



CATEGORY	A	B	C	D	E
S-ILS 16L	512/18 200 (200-1/2)				
S-LOC 16L	820/24	508 (500-1/2)	820/55 508 (500-1)		
CIRCLING	880-1	534 (600-1)	900-1 1/2 554 (600-1 1/2)	960-2 614 (700-2)	1040-2 1/2 694 (700-2 1/2)
	Knots 60 90 120 150 180				
	Min:Sec 5:30 3:40 2:45 2:12 1:50				

SC-4, 16 JUL 2020 to 13 AUG 2020

SC-4, 16 JUL 2020 to 13 AUG 2020