

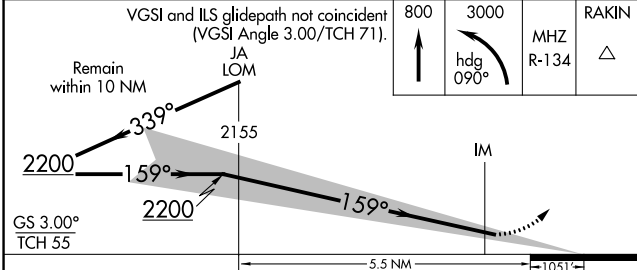
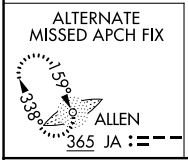
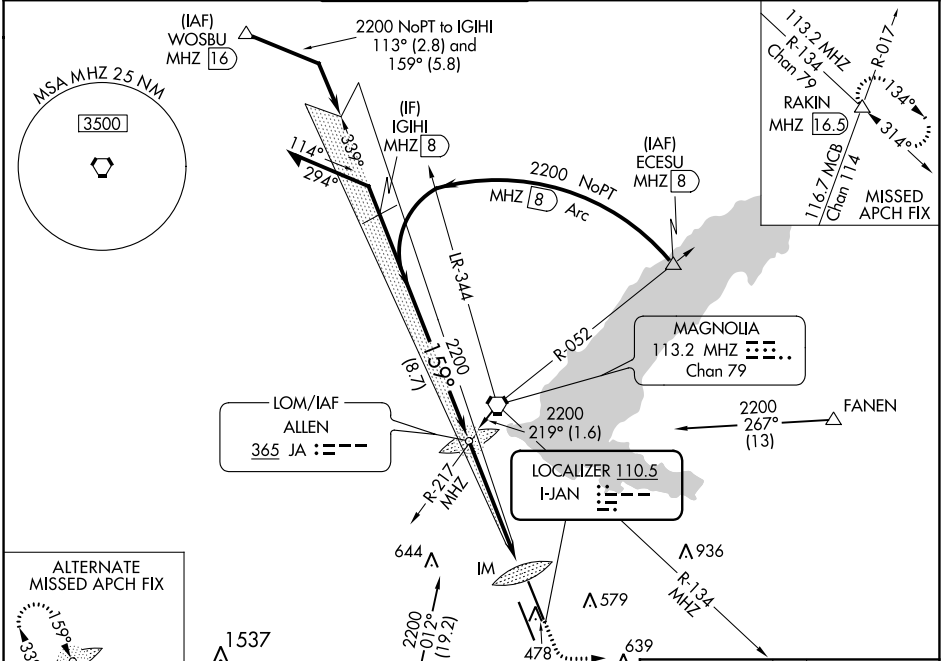
LOC I-JAN 110.5	APP CRS 159°	Rwy Idg 8500
		TDZE 312
		Apt Elev 346

ILS RWY 16L (CAT II & III)

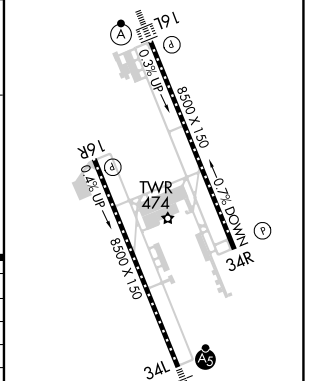
JACKSON-MEDGAR WILEY EVERS INTL (JAN)

<p>▼ When control tower closed, procedure NA. ▲ When local altimeter setting not received, procedure NA. ASR</p>	ALSF-2 	MISSED APPROACH: Climb to 800 then climbing left turn to 3000 on heading 090° and MHz VORTAC R-134 to RAKIN INT/MHZ 16.5 DME and hold.
--	------------	--

ATIS 121.05	JACKSON APP CON * 123.9 317.7	JACKSON TOWER * 120.9 (CTAF) 0 352.0	GND CON 121.7 348.6	120.7 0 * 120.7 0 *	UNICOM 122.95
-----------------------	---	--	-------------------------------	-------------------------------	-------------------------



ELEV 346	TDZE 312
----------	----------



CATEGORY	A	B	C	D
S-ILS 16L		CAT II RA 119/12 100 DA 412		
S-ILS 16L		CAT IIIA RVR 07		
S-ILS 16L		CAT IIIB RVR 06		
S-ILS 16L		CAT IIIC NA		

CATEGORY II & III ILS - SPECIAL AIRCREW & AIRCRAFT CERTIFICATION REQUIRED

REIL Rwy 16R **1** *
 REIL Rwy 34R **1**
 HIRL Rwy 16L-34R and 16R-34L **1**

SC-4, 16 JUL 2020 to 13 AUG 2020

SC-4, 16 JUL 2020 to 13 AUG 2020