

LOC I-ISO	APP CRS	Rwy Idg	<b>10960</b>
<b>111.3</b>	<b>050°</b>	TDZE	<b>93</b>
		Apt Elev	<b>93</b>

# ILS or LOC RWY 5

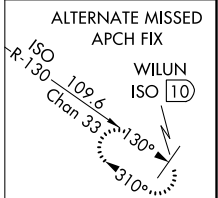
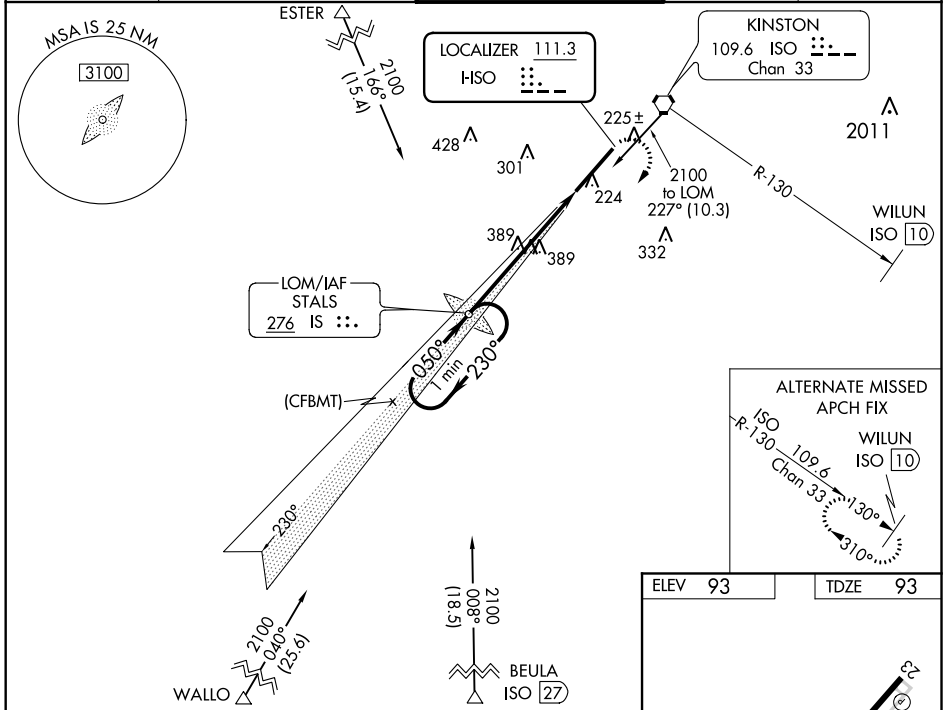
KINSTON RGNL JETPORT AT STALLINGS FIELD (ISO)

**⚠** ADF Required. When local altimeter setting not received, use Seymour Johnson AFB altimeter setting and increase DA to 336; increase all MDA 60 feet and S-LOC 5 Cats C and D visibility 1/8 mile and Circling Cat D visibility 1/4 mile. For inop MALS, increase S-LOC 5 Cats C and D visibility to 1 1/8 mile. For inop MALS, increase Seymour Johnson AFB altimeter setting, increase S-LOC 5 Cats C and D visibility to 1 3/4 mile.  
**\*\* RVR 1800 authorized with use of FD or AP or HUD to DA, NA when using Seymour Johnson AFB altimeter setting.**

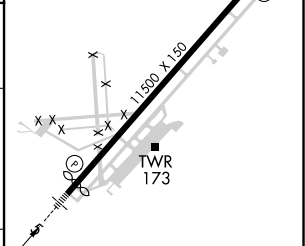
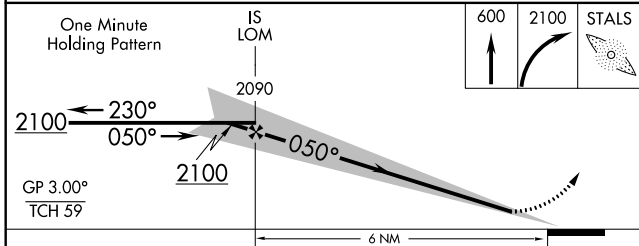
**MALS**

**MISSED APPROACH:**  
 Climb to 600 then climbing right turn to 2100 direct STALS LOM and hold.

AWOS-3	SEYMOUR JOHNSON APP CON *	KINSTON TOWER *	GND CON	UNICOM
<b>132.75</b>	<b>127.3 273.6</b>	<b>120.6 (CTAF) 0 335.55</b>	<b>121.9</b>	<b>122.95</b>



ELEV	93	TDZE	93
------	----	------	----



CATEGORY	A	B	C	D
S-ILS 5 **	293/24		200 (200-1/2)	
S-LOC 5	640/24	547 (600-1/2)	640/60	547 (600-1 1/4)
<b>C</b> CIRCLING	640-1	547 (600-1)	700-1 3/4 607 (700-1 3/4)	740-2 647 (700-2)

FAF to MAP 6 NM					
Knots	60	90	120	150	180
Min:Sec	6:00	4:00	3:00	2:24	2:00

# ILS or LOC RWY 5

SE-2, 16 JUL 2020 to 13 AUG 2020

SE-2, 16 JUL 2020 to 13 AUG 2020