

| | | | |
|--|------------------------|-----------------------------|---|
| WAAS CH 45627 W16A | APP CRS 161° | Rwy Idg TDZE Apt Elev | 5001 643 647 |
|--|------------------------|-----------------------------|---|

RNAV (GPS) RWY 16

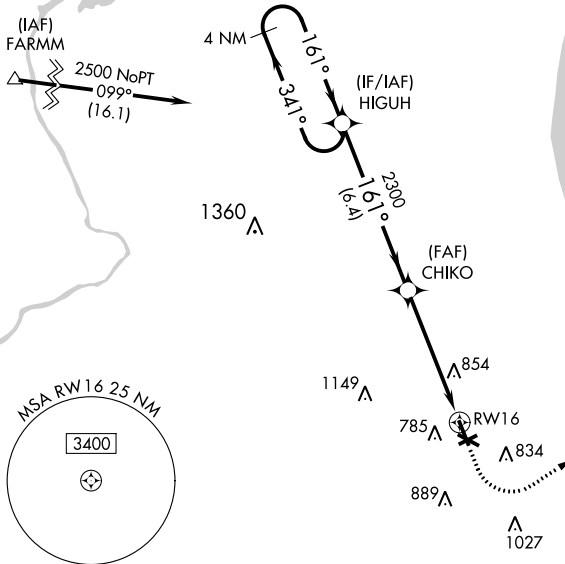
CHICAGO EXECUTIVE (PWK)

⚠ Circling to Rwy 6, 12, 24, 30, 34 NA at night. For uncompensated Baro-VNAV systems, LNAV/VNAV NA below -16°C (4°F) or above 39°C (102°F). Rwy 16 helicopter visibility reduction below 3/4 SM NA. DME/DME RNP-0.3 NA. When local altimeter setting not received, use Chicago O'Hare Intl altimeter setting and increase all DA 22 feet and all MDA 40 feet and increase LNAV Cats C and D visibility 1/4 mile, and Circling Cat C visibility 1/8 mile. VDP and Baro-VNAV NA with Chicago O'Hare Intl altimeter setting.

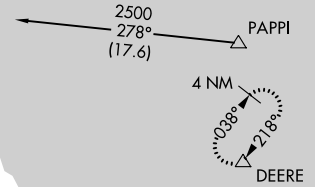
MISSED APPROACH:
Climb to 1200 then climbing left turn to 2100 direct DEERE and hold.

| | | | | | |
|----------------------|--|--|-------------------------|---|-------------------------|
| ATIS 124.2 | CHICAGO APP CON 120.55 306.925 | EXECUTIVE TOWER * 119.9 (CTAF) 0 | GND CON 121.7 | CLNC DEL 124.7 (when tower closed) | UNICOM 122.95 |
|----------------------|--|--|-------------------------|---|-------------------------|

Procedure NA for arrivals at FARMM on V24-100-228 northwest bound.

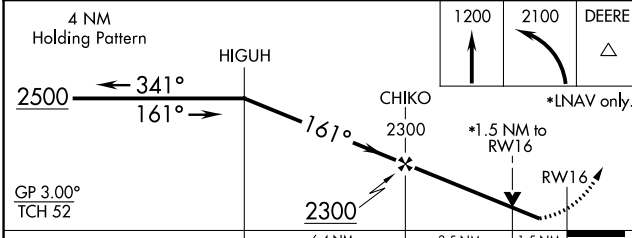


Procedure NA for arrivals at PAPPI on V84 eastbound and on V7 southbound.

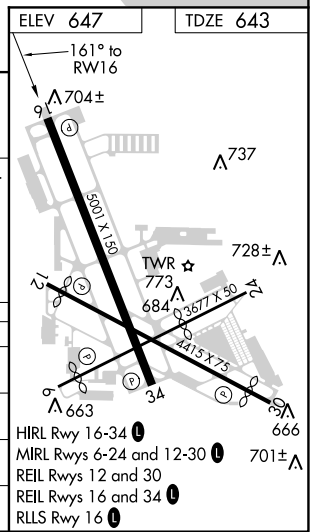


EC-3, 16 JUL 2020 to 13 AUG 2020

EC-3, 16 JUL 2020 to 13 AUG 2020



| CATEGORY | A | B | C | D |
|--------------|----------------------|----------------------|--------------------|---|
| LPV DA | 905-1 262 (300-1) | | | |
| LNAV/VNAV DA | 1088-1½ 445 (500-1½) | | | |
| LNAV MDA | 1160-1 517 (600-1) | 1160-1⅓ 517 (600-1⅓) | | |
| CIRCLING | 1160-1 513 (600-1) | 1160-1½ 513 (600-1½) | 1200-2 553 (600-2) | |



HIRL Rwy 16-34
MIRL Rwy 6-24 and 12-30
REL Rwy 12 and 30
REL Rwy 16 and 34
RLS Rwy 16