

WAAS CH 42528 W24A	APP CRS 238°	Rwy Idg 5000 TDZE 873 Apt Elev 876
--	------------------------	---

RNAV (GPS) RWY 24

CUYAHOGA COUNTY (CGF)

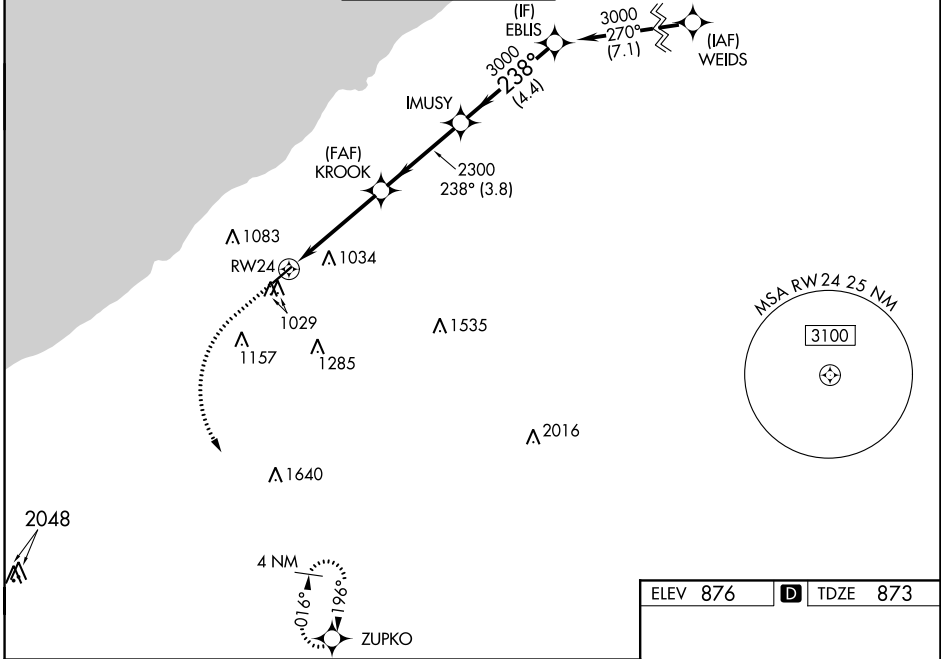
RNP APCH.




⚠ For uncompensated Baro-VNAV systems, LNAV/VNAV NA below -16°C or above 38°C. For inop ALS increase LNAV/VNAV visibility all Cats to 7/8 SM, LNAV Cat C, D to 1 1/8 SM.

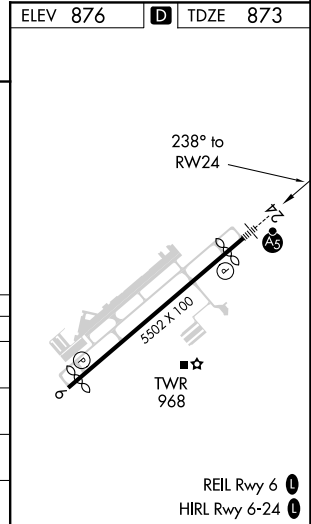
MALSR


MISSED APPROACH:
Climb to 2500 then climbing left turn to 3000 direct ZUPKO and hold.

AWOS-3 119.95	CLEVELAND APP CON 125.35 346.325	COUNTY TOWER★ 118.5 (CTAF) 	GND CON 121.85	CLNC DEL 121.85 (when tower closed)
-------------------------	--	--	--------------------------	--



2500	3000	ZUPKO		
				
*LNAV only	KROOK 2300			
*1.1 NM to RWY 24	IMUSY 2300			
1.1 NM	3.2 NM	3.8 NM		
RWY 24		EBLIS 3000		
GP 3.00°		TCH 44		
CATEGORY	A	B	C	D
LPV DA	1073-1/2		200 (200-1/2)	
LNAV/VNAV DA	1178-1/2		305 (400-1/2)	
LNAV MDA	1280-1/2		1280-3/4	
	407 (500-1/2)		407 (500-3/4)	
C CIRCLING	1400-1	1500-1	1560-2	1620-2 1/2
	524 (600-1)	624 (700-1)	684 (700-1)	744 (800-2 1/2)



EC-2, 16 JUL 2020 to 13 AUG 2020

EC-2, 16 JUL 2020 to 13 AUG 2020