

WAAS CH 86327 W09A	APP CRS 090°	Rwy Idg TDZE Apt Elev	4977 35 40
--	------------------------	-----------------------------	---------------------------------------

RNAV (GPS) RWY 9

FRANKLIN RGNL (F'KN)

RNP APCH.

⚠ Baro-VNAV NA when using Suffolk altimeter setting. For uncompensated Baro-VNAV systems, LNAV/VNAV NA below -1.5°C or above 54°C. When local altimeter setting not received, use Suffolk altimeter setting: increase LPV DA to 358 feet and visibility all Cats ½ SM; increase LNAV/VNAV DA to 357 feet and visibility all Cats ½ SM; increase all MDA 40 feet and LNAV Cats C/D visibility ½ SM. Rwy 9 helicopter visibility reduction below 1 SM NA. Procedure NA at night.

MISSED APPROACH:
Climb to 2600 direct JADIM and hold.

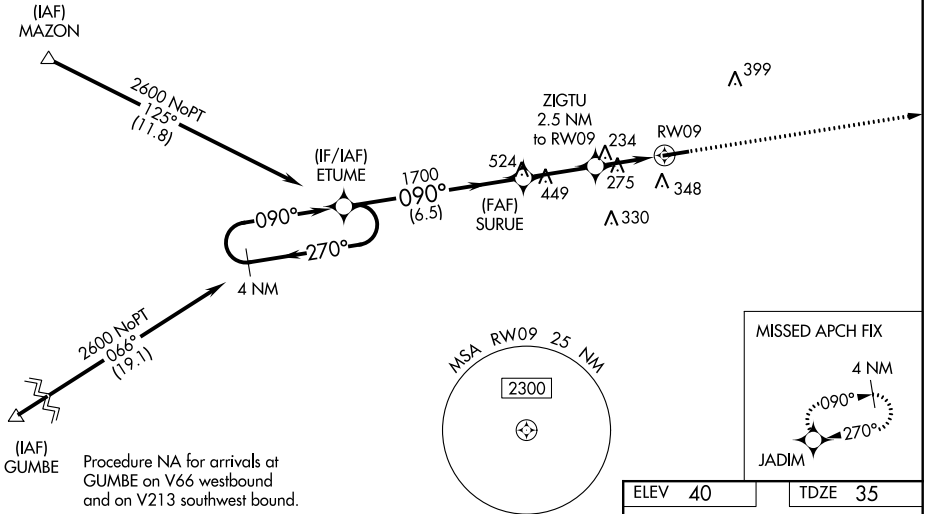
AWOS-3PT
124.675

NORFOLK APP CON
127.9 269.425

UNICOM
122.8 (CTAF) ①

Procedure NA for arrivals at MAZON on V266 westbound.

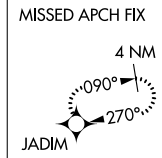
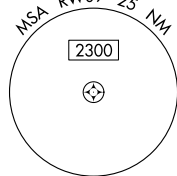
1096 **⚠**



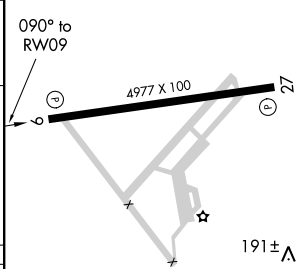
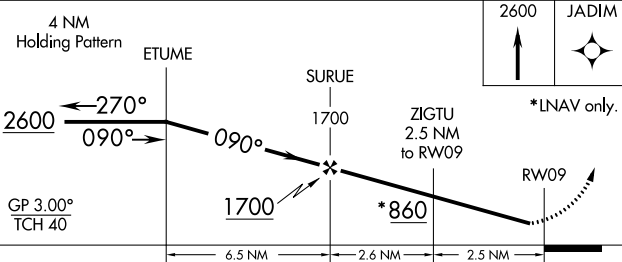
NE-3, 16 JUL 2020 to 13 AUG 2020

NE-3, 16 JUL 2020 to 13 AUG 2020

Procedure NA for arrivals at GUMBE on V66 westbound and on V213 southwest bound.



ELEV 40	TDZE 35
---------	---------



CATEGORY	A	B	C	D
LPV DA		320-1	285 (300-1)	
LNAV/VNAV DA		319-1	284 (300-1)	
LNAV MDA	580-1	545 (600-1)	580-1½	545 (600-1½)

MIRL Rwy 9-27 **①**