

WAAS CH <b>90227</b> <b>W27A</b>	APP CRS <b>270°</b>	Rwy Idg TDZE <b>40</b> Apt Elev <b>40</b>	<b>4977</b>
--	------------------------	---	-------------

# RNAV (GPS) RWY 27

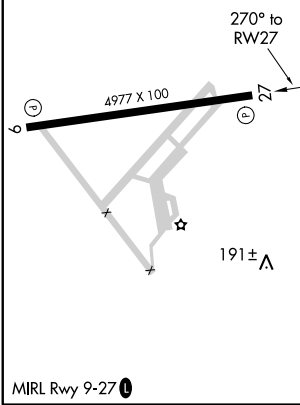
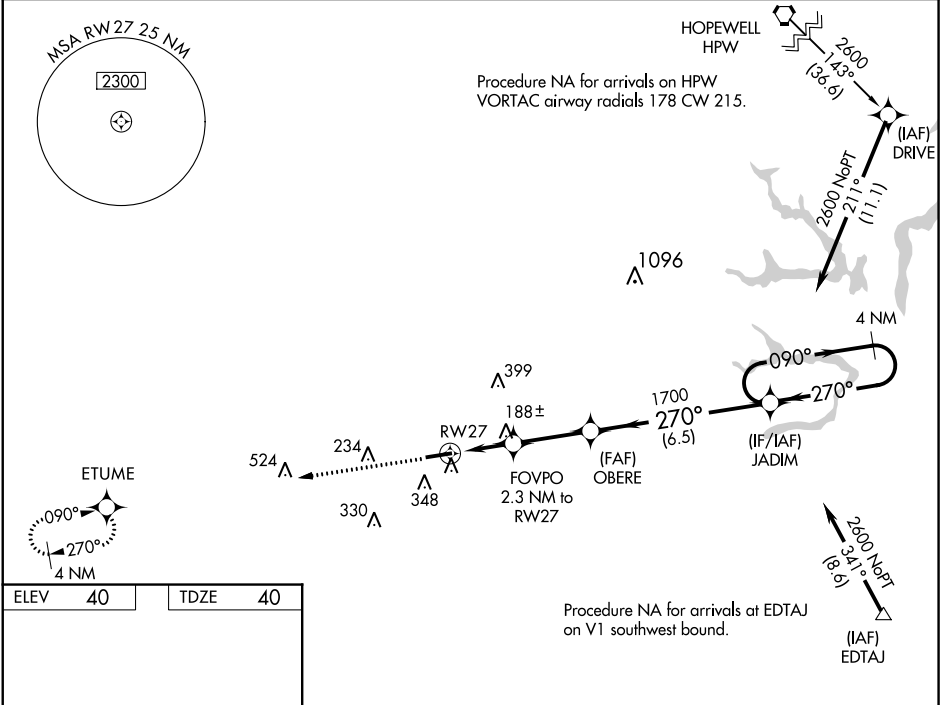
FRANKLIN RGNL (F'KN)

RNP APCH.

**⚠** For uncompensated Baro-VNAV systems, LNAV/VNAV NA below -1.5°C or above 54°C. Baro-VNAV and VDP NA when using Suffolk altimeter setting. When local altimeter setting not received, use Suffolk altimeter setting: increase LPV DA to 404 feet and visibility all Cats 1/8 SM; increase LNAV/VNAV DA to 392 feet and visibility all Cats 1/4 SM; increase all MDA 40 feet and LNAV Cats C/D visibility 1/8 SM. Rwy 27 helicopter visibility reduction below 3/4 SM NA.

MISSED APPROACH: Climb to 2600 direct ETUME and hold.

AWOS-3PT <b>124.675</b>	NORFOLK APP CON <b>127.9 269.425</b>	UNICOM <b>122.8 (CTAF) 0</b>
----------------------------	---	---------------------------------



	2600	ETUME	* LNAV only.		JADIM	4 NM Holding Pattern
			FOVPO 2.3 NM to RW27	OBERE 1700		
			* 1.1 NM to RW27	* 800	1700	2600
			1.1 NM	1.2 NM	2.8 NM	6.5 NM
CATEGORY	A		B		C	
LPV DA	366-1 1/8		326 (400-1 1/8)			
LNAV/VNAV DA	354-1		314 (400-1)			
LNAV MDA	440-1		400 (400-1)		440-1 1/8 400 (400-1 1/8)	

NE-3, 16 JUL 2020 to 13 AUG 2020

NE-3, 16 JUL 2020 to 13 AUG 2020