

ILS or LOC RWY 17

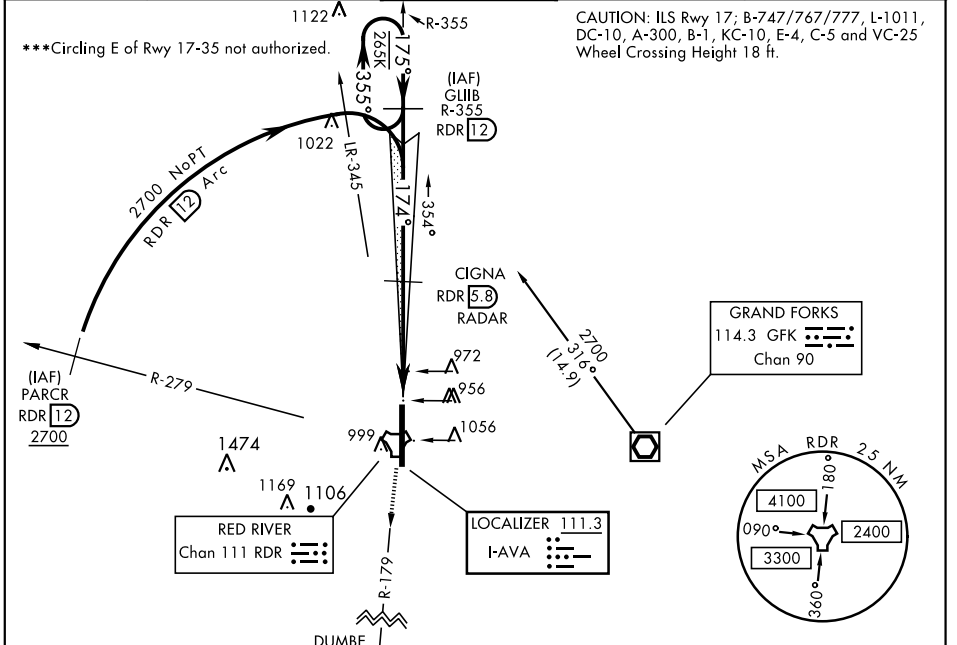
LOC I-AVA 111.3	APCH CRS 174°	Rwy ldg 12,351 TDZE 900 Arprt Elev 911	AL-5010 [USAF]	GRAND FORKS AFB (KRDR)
---------------------------	-------------------------	---	----------------	------------------------

* When ALS inop, increase RVR to 40 and vis to 3/4 mile.
 ** When ALS inop, increase CAT AB RVR to 55 and vis to 1 mile;
 CAT CDE RVR to 50, vis to 1 mile.

ALSF-1

MISSÉ APPROACH: Climb to 3000 on RDR TACAN R-179 to DUMBE and hold.

ATIS 273.45	GRAND FORKS APP CON 118.1 318.1	RED RIVER TOWER 124.9 349.0	GND CON 119.15 275.8	CLNC DEL 119.15 360.7
-----------------------	---	---------------------------------------	--------------------------------	---------------------------------



NC-1, 16 JUL 2020 to 13 AUG 2020

NC-1, 16 JUL 2020 to 13 AUG 2020

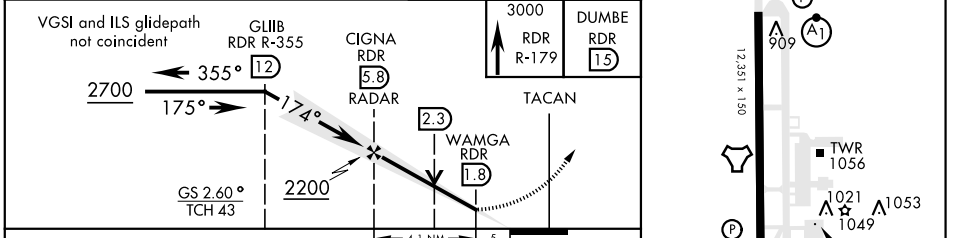
891 **RADAR or DME REQUIRED**

EMERG SAFE ALT 100 NM 4100

RED RIVER Chan 111 RDR

LOCALIZER 111.3 I-AVA

DUMBE RDR



CATEGORY	A	B	C	D	E
S-ILS 17 *	1100/24		200	(200-1/2)	
S-LOC 17 **	1240/24	340 (400-1/2)	1240/26	340	(400-1/2)
*** CIRCLING	1340-1 429 (500-1)	1380-1 469 (500-1)	1380-1 1/2 469 (500-1 1/2)	1480-2 569 (600-2)	2040-3 1129 (1200-3)

HIRL Rwy 17-35

FAF to MAP 4.1 NM					
Knots	60	90	120	150	180
Min:Sec	4:06	2:44	2:03	1:36	1:20

ILS or LOC RWY 17