

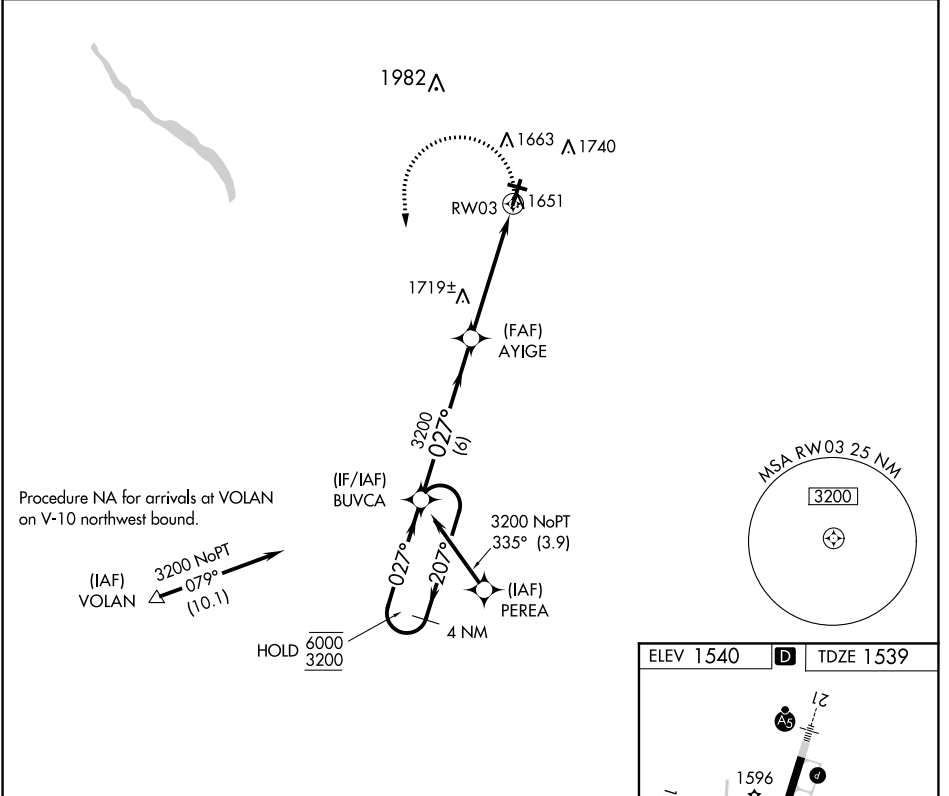
# RNAV (GPS) RWY 3

VENANGO RGNL (F'KL)

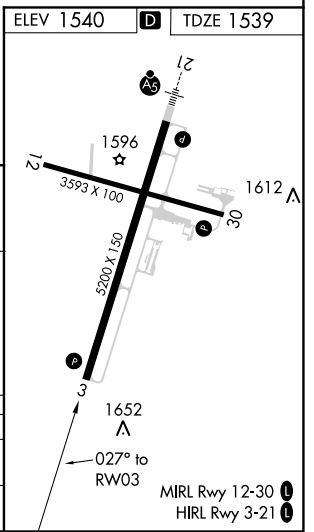
APP CRS <b>027°</b>	Rwy Idg <b>5200</b>
	TDZE <b>1539</b>
	Apt Elev <b>1540</b>

RNP APCH.	MISSED APPROACH: Climbing left turn to 3200 direct BUVCA and hold.
Rwy 3 helicopter visibility reduction below 3/4 SM NA.	
Circling Rwy 12 NA at night.	

AWOS-3PT <b>118.175</b>	YOUNGSTOWN APP CON ★ <b>126.25 322.3</b>	CLNC DEL <b>126.25</b>	UNICOM <b>122.7</b> (CTAF)
----------------------------	---	---------------------------	-------------------------------



4 NM Holding Pattern	Visual Segment-Obstacles.			
	BUVCA	AYIGE	3200	BUVCA
6000 3200	← 207°	→ 027°	→ 027°	→ 027°
	6 NM	3.7 NM	1.3 NM	1.3 NM to RWY 3
CATEGORY	A	B	C	D
LNVA MDA	1980-1	441 (500-1)	1980-1 3/8	441 (500-1 3/8)
CIRCLING	1980-1 440 (500-1)	2000-1 460 (500-1)	2000-1 1/2 460 (500-1 1/2)	2100-2 560 (600-2)



NE-4, 16 JUL 2020 to 13 AUG 2020

NE-4, 16 JUL 2020 to 13 AUG 2020