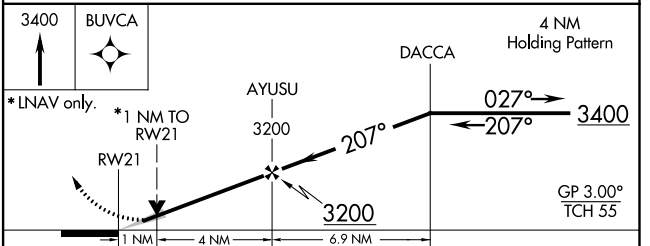
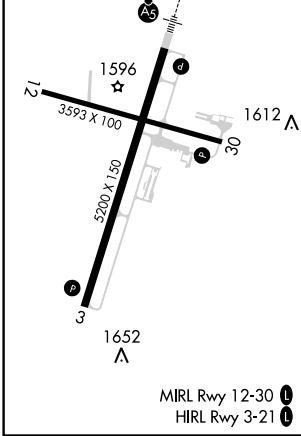
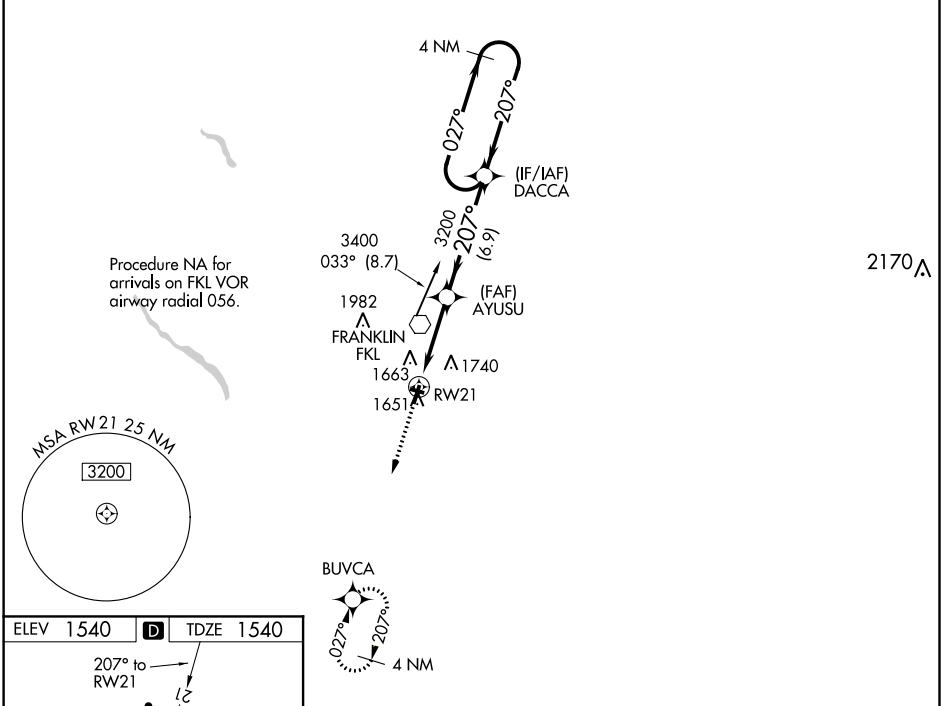


WAAS CH 77501 W21A	APP CRS 207°	Rwy Idg TDZE Apt Elev	5200 1540 1540
--	------------------------	-----------------------------	---

RNAV (GPS) RWY 21

VENANGO RGNL (F'KL)

RNP APCH.		MALSR	MISSED APPROACH: Climb to 3400 direct BUVCA and hold.
<p>▼ For uncompensated Baro-VNAV systems, LNAV/VNAV NA below -18°C (0°F) or above 45°C (114°F). Circling Rwy 12 NA at night. For inop ALS, increase LPV all Cats visibility to ¾ SM and LNAV Cats C/D visibility to 1 SM.</p>			
AWOS-3PT 118.175	YOUNGSTOWN APP CON ★ 126.25 322.3	CLNC DEL 126.25	UNICOM 122.7 (CTAF)



CATEGORY	A	B	C	D
LPV DA		1803-½	263 (300-½)	
LNAV/VNAV DA		1901-¾	361 (400-¾)	
LNAV MDA	1900-½	360 (400-½)	1900-⅝	360 (400-⅝)
CIRCLING	1960-1¼ 420 (500-1¼)	2000-1¼ 460 (500-1¼)	2000-1½ 460 (500-1½)	2100-2 560 (600-2)

NE-4, 16 JUL 2020 to 13 AUG 2020

NE-4, 16 JUL 2020 to 13 AUG 2020