

LOC I-FKL 110.5	APP CRS 207°	Rwy ldg TDZE 5200 1540	Apt Elev 1540
---------------------------	------------------------	--	-------------------------

ILS or LOC RWY 21

VENANGO RGNL (FKL)

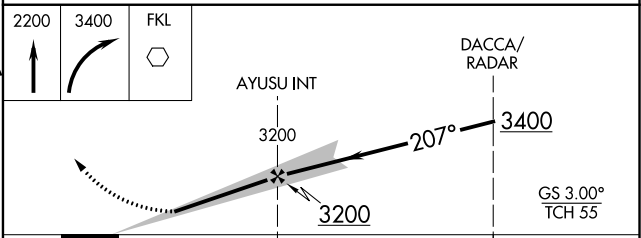
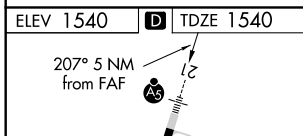
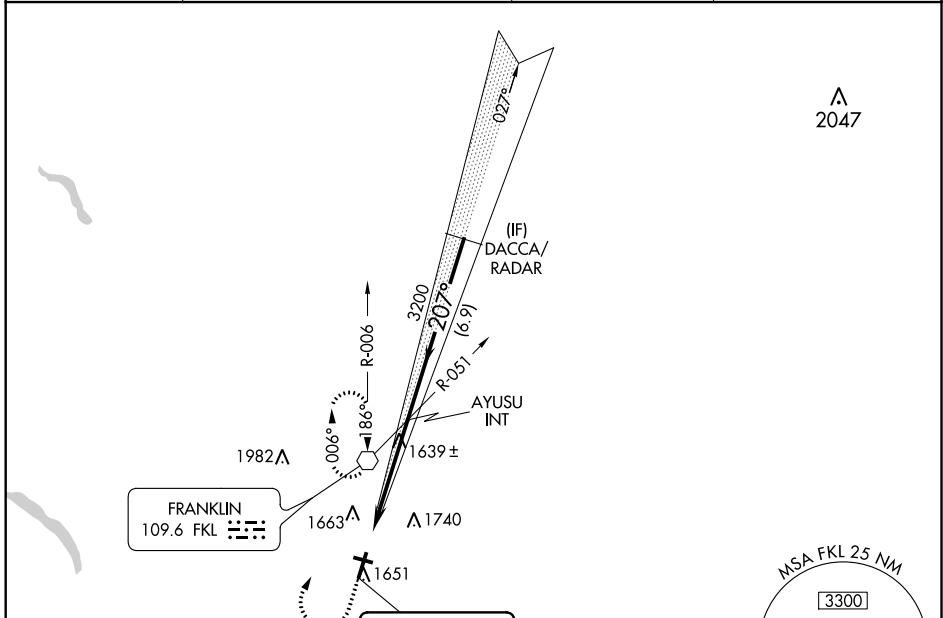
RADAR required to define DACCA.
RADAR required for procedure entry.

MALS
AS

MISSED APPROACH: Climb to 2200 then climbing right turn to 3400 direct FKL VOR and hold, continue climb-in-hold to 3400.

For inop ALS, increase S-LOC 21 Cat C/D visibility to 1 SM.
Circling Rwy 12 NA at night.

AWOS-3PT 118,175	YOUNGSTOWN APP CON ★ 126.25 322.3	CLNC DEL 126.25	UNICOM 122.7 (CTAF)
----------------------------	---	---------------------------	-------------------------------



ELEV 1540	D	TDZE 1540
207° 5 NM from FAF	AS	
1596	1612	1652
3593 X 100	30	
5200 X 150		
1652	MIRL Rwy 12-30	
	HIRL Rwy 3-21	
FAF to MAP 5 NM		
Knots	60	90
Min:Sec	5:00	3:20
	120	150
	2:30	2:00
	180	1:40

CATEGORY	A	B	C	D
S-ILS-21	1740-½ 200 (200-½)			
S-LOC-21	1900-½ 360 (400-½)	1900-⅝ 360 (400-⅝)		
CIRCLING	1960-1 420 (500-1)	2000-1 460 (500-1)	2000-1½ 460 (500-1½)	2100-2 560 (600-2)

NE-4, 16 JUL 2020 to 13 AUG 2020

NE-4, 16 JUL 2020 to 13 AUG 2020