

VORTAC CAE 114.70 Chan 94	APCH CRS 186°	Rwy ldg TDZE Arprt Elev	N/A N/A 321
---	-------------------------	-------------------------------	--

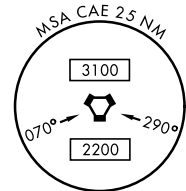
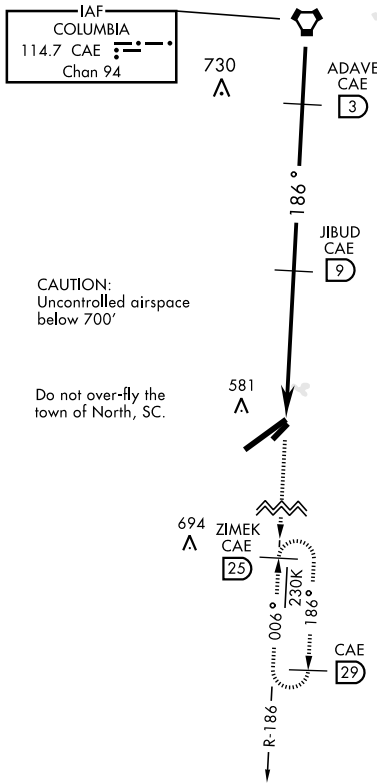
AL-3017 [USAF]

VOR/DME-A

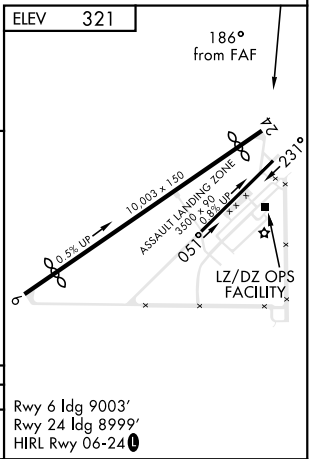
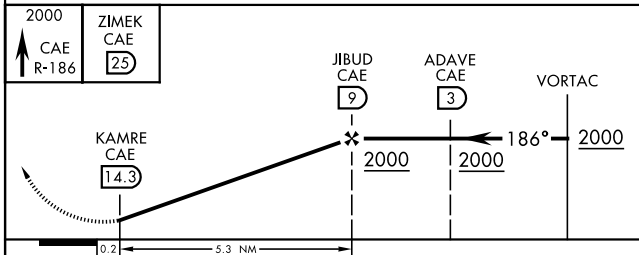
NORTH AF AUX (KXNO)

<p>▼ * Circling to Rwy 5-23 not authorized.</p>	<p>MISSED APPROACH: Climb to 2000 via CAE VORTAC R-186 to ZIMEK and hold as published.</p>
--	--

<p>ASOS (KOGB) 118.525</p>	<p>LZ/DZ OPS FACILITY 120.475 0 235.775</p>	<p>COLUMBIA APP CON 124.15 338.2</p>
---------------------------------------	--	---



EMERG SAFE ALT 100 NM 4800



CATEGORY	A	B	C	D	E
C CIRCLING*	920-1	599 (600-1)	920-1½ 599 (600-1½)	1400-3	1079 (1100-3)

Rwy 6 ldg 9003'
Rwy 24 ldg 8999'
HIRL Rwy 06-24

VOR/DME-A

SE-2, 16 JUL 2020 to 13 AUG 2020

SE-2, 16 JUL 2020 to 13 AUG 2020