

NORTH, SOUTH CAROLINA

RNAV (GPS) RWY 6

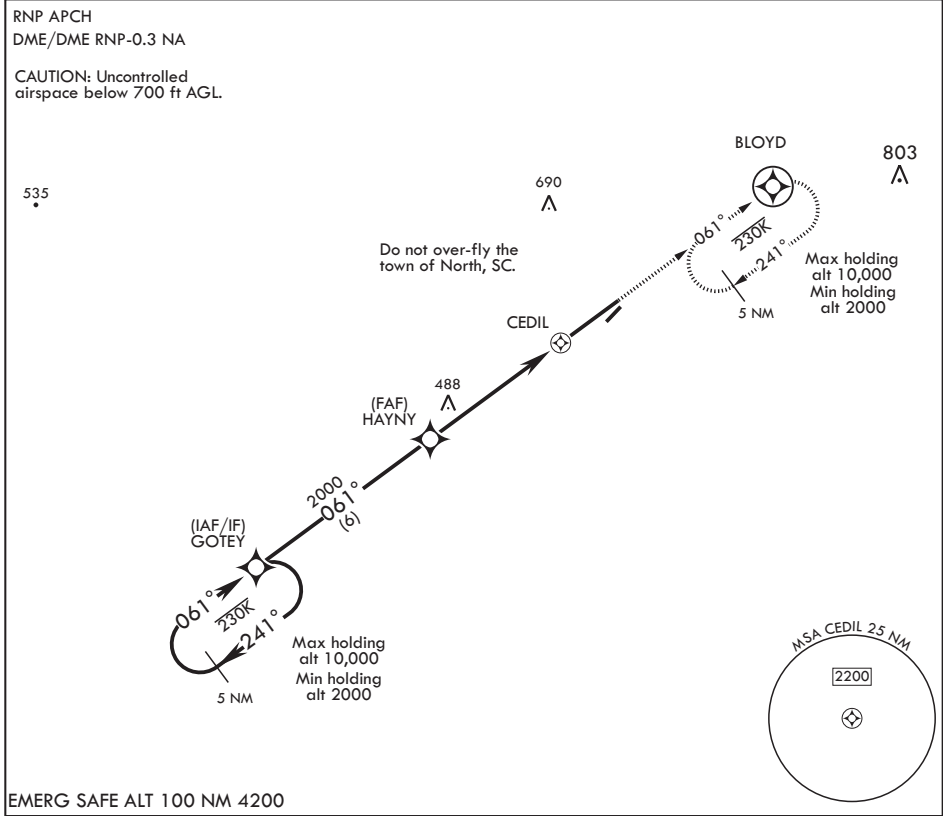
APCH CRS 061°	Rwy Idg 9003
	TDZE 281
	Arprt Elev 321

AL-3017 (USAF)

NORTH AF AUX (KXNO)

⚠ * Circling to Rwy 5-23 not authorized. MISSED APPROACH: Climb to 2000 direct BLOYD and hold.

ASOS 118.525	COLUMBIA APP CON/DEP CON 124.15 338.2	LZ/DZ OPS FAC 120.475 235.775
------------------------	---	---



EMERG SAFE ALT 100 NM 4200

2000	BLOYD	ELEV 321	TDZE 281
2000	⬆	⬆	Rwy 6 Idg 9003' Rwy 24 Idg 8999'
2000	⬆	⬆	581
2000	← 241°	← 061°	← 061°
2000	GOTEY	HAYNY	CEDIL
3.16° ≥ TCH 50		0.8 NM to CEDIL	0.5
		4.5 NM	
			0.59% UP
			10,003 x 150
			2500 x 200
			0.98% UP
			231°
			TWR
			LZ/DZ OPS FACILITY
			BCN
			061° to RW06
			HIRL Rwy 6-24

CATEGORY	A	B	C	D	E
LNVA MDA	740-1	459 (500-1)	740-1 3/8	459	(500-1 3/8)
C CIRCLING*	920-1	599 (600-1)	920-1 1/2 599 (600-1 1/2)	1400-3	1079 (1100-3)

NORTH, SOUTH CAROLINA
Amdt 1 23APR20

33°37'N - 81°05'W

NORTH AF AUX (KXNO)

RNAV (GPS) RWY 6

SE-2, 16 JUL 2020 to 13 AUG 2020

SE-2, 16 JUL 2020 to 13 AUG 2020