

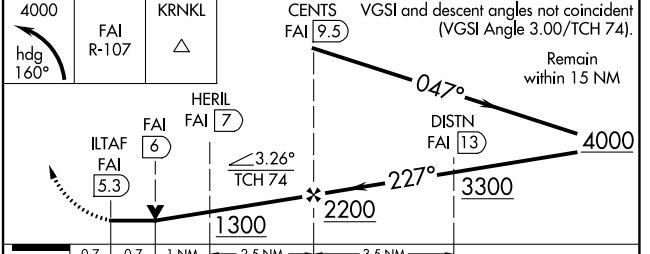
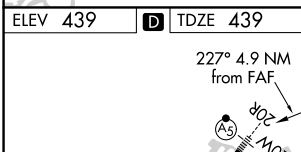
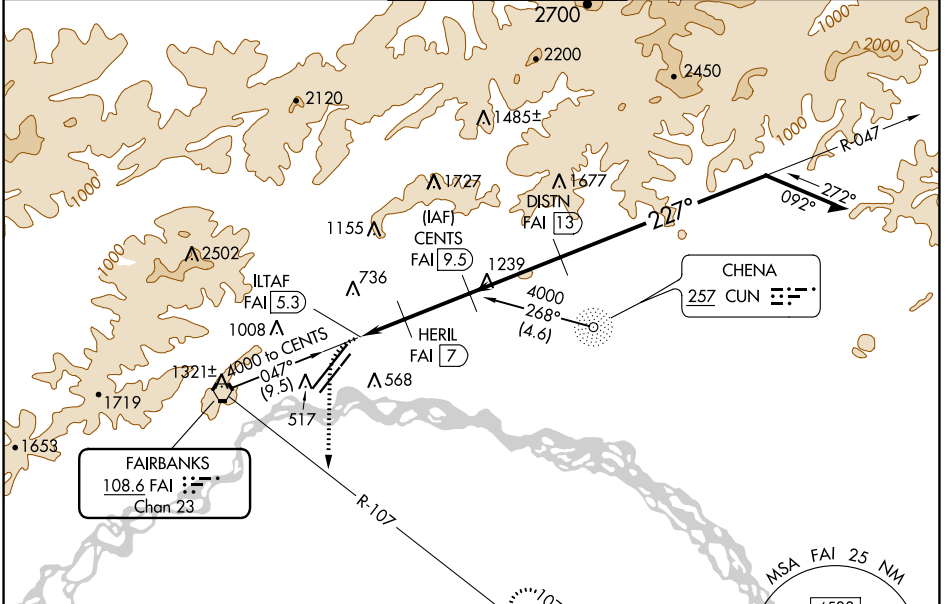
VORTAC FAI 108.6 Chan 23	APP CRS 227°	Rwy Idg 11050 TDZE 439 Apt Elev 439
---------------------------------------	------------------------	--

VOR or TACAN RWY 20R

FAIRBANKS INTL (FAI) (PAFA)

DME Required. DME required for procedure entry.		MALSR	MISSED APPROACH: Climbing left turn to 4000 on heading 160° and FAI VORTAC R-107 to KRNL/FAI 13 DME and hold, continue climb-in-hold to 4000.
<p>⚠ Circling NA west of Rwy 2L-20R. Inop table does not apply.</p> <p>⚠ Circling NA to Rwy 2W and 20W. Rwy 20 helicopter visibility reduction below RVR 4000 NA.</p> <p>❄ -32°C</p>			

ATIS 124.4	FAIRBANKS APP CON 125.35 363.2	FAIRBANKS TOWER 118.3 257.8	GND CON 121.9	CLNC DEL 127.6
----------------------	--	---------------------------------------	-------------------------	--------------------------



	0.7	0.7	1 NM	2.5 NM	3.5 NM			
CATEGORY	A		B	C	D	E		
S-20R	940/55		501 (600-1)	940-1 ³ / ₈		501 (600-1 ³ / ₈)		
<input checked="" type="checkbox"/> CIRCLING	940-1		501 (600-1)	940-1 ¹ / ₂	1020-2	581 (600-2)	1100-2 ¹ / ₄	661 (700-2 ¹ / ₄)

AK, 16 JUL 2020 to 10 SEP 2020

AK, 16 JUL 2020 to 10 SEP 2020