

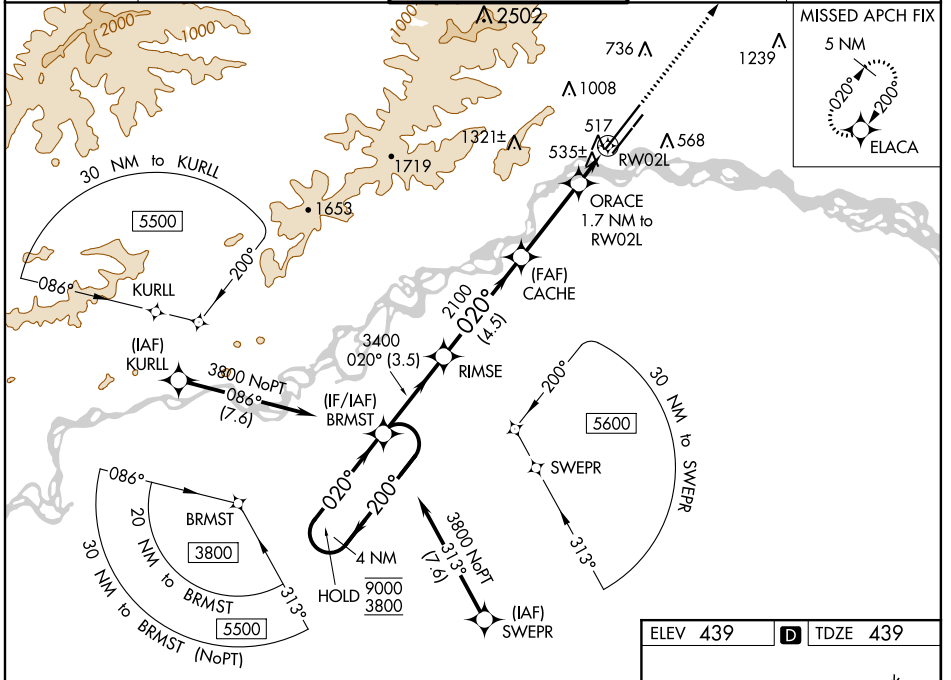
WAAS CH 57915 W02B	APP CRS 020°	Rwy Idg 11050 TDZE 439 Apt Elev 439
--	------------------------	--

RNAV (GPS) Y RWY 2L

FAIRBANKS INTL (FAI) (PAFA)

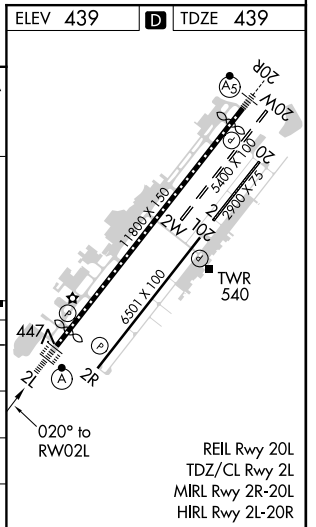
RNP APCH. Circling NA west of Rwy 2L-20R. Circling NA to Rwy 2W and 20W. -32°C For uncompensated Baro-VNAV systems, LNAV/VNAV NA below -19°C or above 54°C. For inop ALS, increase LNAV/VNAV all Cats visibility to RVR 4500 and LNAV Cat C/D visibility to RVR 5500.	ALSIF-2 	MISSED APPROACH: Climb to 4900 direct ELACA and hold, continue climb-in hold to 4900.
--	-------------	---

ATIS 124.4	FAIRBANKS APP CON 125.35 363.2	FAIRBANKS TOWER 118.3 257.8	GND CON 121.9	CLNC DEL 127.6
----------------------	--	---------------------------------------	-------------------------	--------------------------



AK, 16 JUL 2020 to 10 SEP 2020

AK, 16 JUL 2020 to 10 SEP 2020



4 NM Holding Pattern		BRMST		RIMSE		CACHE		ORACE		ELACA	
9000 ← 200°		3800 → 020°		020°		3400		2100		4900	
GP 3.00°		TCH 56									
		← 3.5 NM		← 4.5 NM		← 3.4 NM		← 0.8		← 0.9	
CATEGORY		A		B		C		D			
LPV DA		639/18		200 (200-½)							
LNAV/VNAV DA		720/24		281 (300-½)							
LNAV MDA		800/24		361 (400-½)		800/40		361 (400-¾)			
CIRCLING		880-1		900-1		900-1½		1020-2			
		441 (500-1)		461 (500-1)		461 (500-1½)		581 (600-2)			