

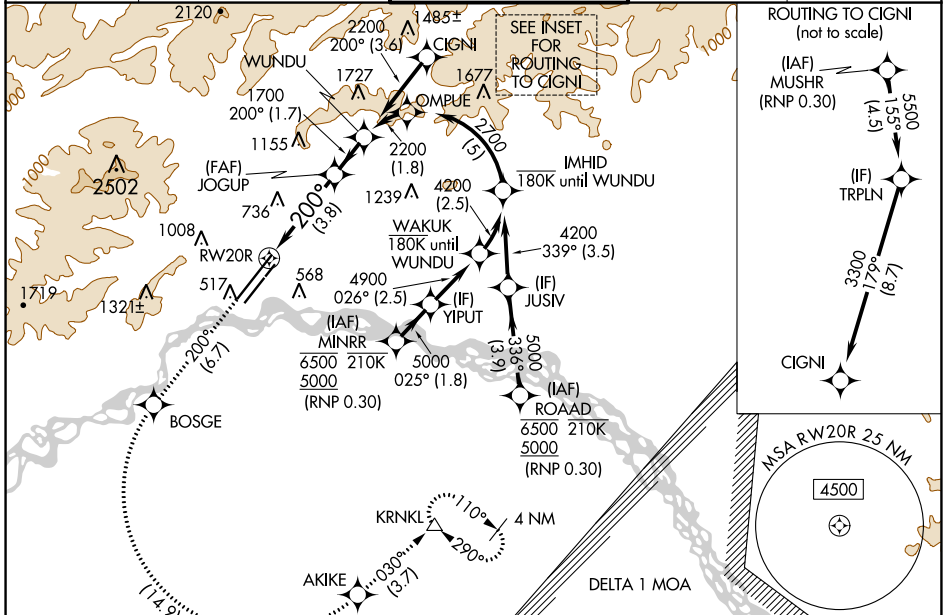
APP CRS	Rwy ldg 11050
200°	TDZE 439
	Apt Elev 439

RNAV (RNP) Z RWY 20R

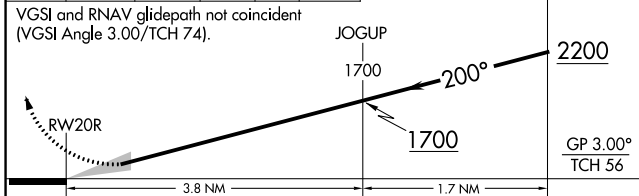
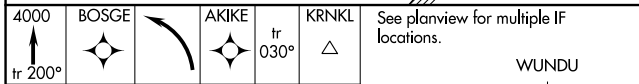
FAIRBANKS INTL (FAI) (PAFA)

-32°C For uncompensated Baro-VNAV systems, procedure NA below -18°C (0°F) or above 54°C (130°F). RF and GPS required. For inop ALS, increase RNP 0.10 all Cats visibility to RVR 5000.	MALSR MISSED APPROACH: Climb to 4000 on track 200° to BOSGE then left turn to AKIKE and on track 030° to KRNLK and hold.
--	---

ATIS 124.4	FAIRBANKS APP CON 125.35 363.2	FAIRBANKS TOWER 118.3 257.8	GND CON 121.9	CLNC DEL 127.6
----------------------	--	---------------------------------------	-------------------------	--------------------------

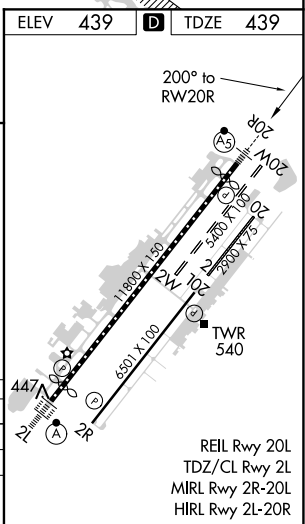


ELEV 439	TDZE 439
----------	----------



CATEGORY	A	B	C	D
RNP 0.10 DA		763/30	324 (400-5/8)	
RNP 0.30 DA		922/60	483 (500-1 1/4)	

AUTHORIZATION REQUIRED



AK, 16 JUL 2020 to 10 SEP 2020

AK, 16 JUL 2020 to 10 SEP 2020