

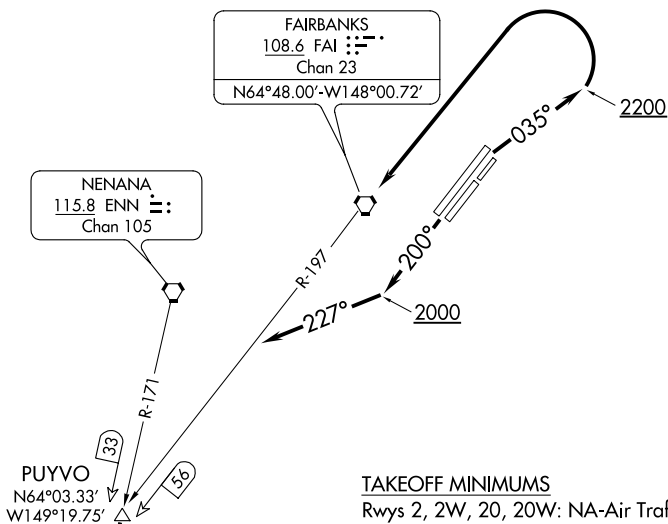
(MKNLY2.TKA) 19227

MCKINLEY TWO DEPARTURE

AL-1234 (FAA)

FAIRBANKS INTL (FAI) (PAFA)
FAIRBANKS, ALASKA

ATIS 124.4
CLNC DEL
127.6
GND CON
121.9
FAIRBANKS TOWER
118.3 257.8
FAIRBANKS DEP CON
125.35 363.2



TAKEOFF MINIMUMS
Rwys 2, 2W, 20, 20W: NA-Air Traffic.
Rwys 2L/R: Standard with minimum climb of 230' per NM to 2200.
Rwys 20L/R: Standard.

NOTE: DME required.

NOTE: Chart not to scale.

DEPARTURE ROUTE DESCRIPTION

TAKEOFF RUNWAYS 2L/R: Climb heading 035° to 2200, then left turn direct FAI VORTAC, thence

TAKEOFF RUNWAYS 20L/R: Climb heading 200° to 2000, then right turn heading 227°, thence

. . . . intercept FAI R-197 to PUYVO/FAI 56 DME fix then on ENN R-171 and TKA R-352 to TKA VOR/DME, then on assigned route and altitude.

AK, 16 JUL 2020 to 10 SEP 2020

AK, 16 JUL 2020 to 10 SEP 2020

MCKINLEY TWO DEPARTURE

(MKNLY2.TKA) 15AUG19

FAIRBANKS, ALASKA
FAIRBANKS INTL (FAI) (PAFA)