

LIBER THREE ARRIVAL (RNAV)

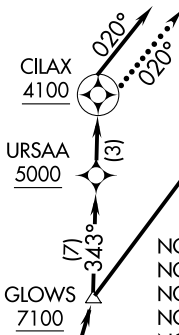
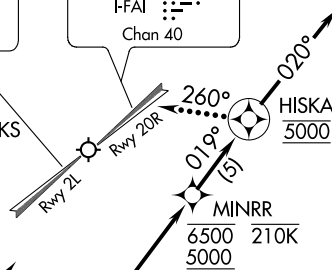
AL-1234 (FAA)

FAIRBANKS APP CON
125.35 363.2
ATIS
124.4

NOTE: Chart not to scale.

LOCALIZER 109.1
I-CNA
Chan 28

LOCALIZER 110.3
I-FAI
Chan 40



- NOTE: RNAV 1.
- NOTE: GPS required.
- NOTE: RADAR required after GLOWES.
- NOTE: Monitor ATIS for Rwy in use.
- NOTE: Expect Rwy assignment from Fairbanks Approach control upon initial contact.

ARRIVAL ROUTE DESCRIPTION

From CAWIN on track 357° to cross LIBER at or above 8900, then on track 358° to cross GLOWES at or above 7100.

LANDING RUNWAY 2L: From GLOWES on track 343° to cross URSAA at or above 5000, then on track 343° to cross CILAX at or above 4100, then on track 020°. Expect RADAR vectors to final approach course.

LANDING RUNWAY 20R: From GLOWES on track 018° to cross MINRR between 5000 and 6500 and at or below 210K, then on track 019° to cross HISKA at 5000, then on track 020°. Expect RADAR vectors to final approach course.

LOST COMMUNICATIONS

RUNWAY 2L: After CILAX, fly heading 020° then proceed on the ILS or LOC RWY 2L approach. If unable, proceed direct FAI VORTAC and hold, maintain 5000.

RUNWAY 20R: After HISKA, fly heading 260°, maintain 4200, then proceed on the ILS or LOC RWY 20R approach. If unable, proceed direct FAI VORTAC and hold, maintain 5000.

CAWIN
12000

LIBER
8900

GLOWES
7100

URSAA
5000

CILAX
4100

MINRR
6500 210K
5000

HISKA
5000

LIBER THREE ARRIVAL (RNAV)