

LOC/DME I-FAI <b>110.3</b> Chan <b>40</b>	APP CRS <b>200°</b>	Rwy Idg <b>11050</b> TDZE <b>439</b> Apt Elev <b>439</b>
---	------------------------	--

# ILS or LOC RWY 20R

FAIRBANKS INTL (FAI) (PAFA)

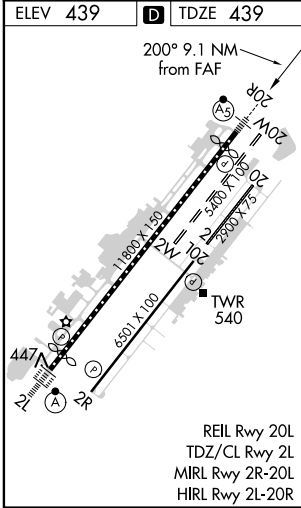
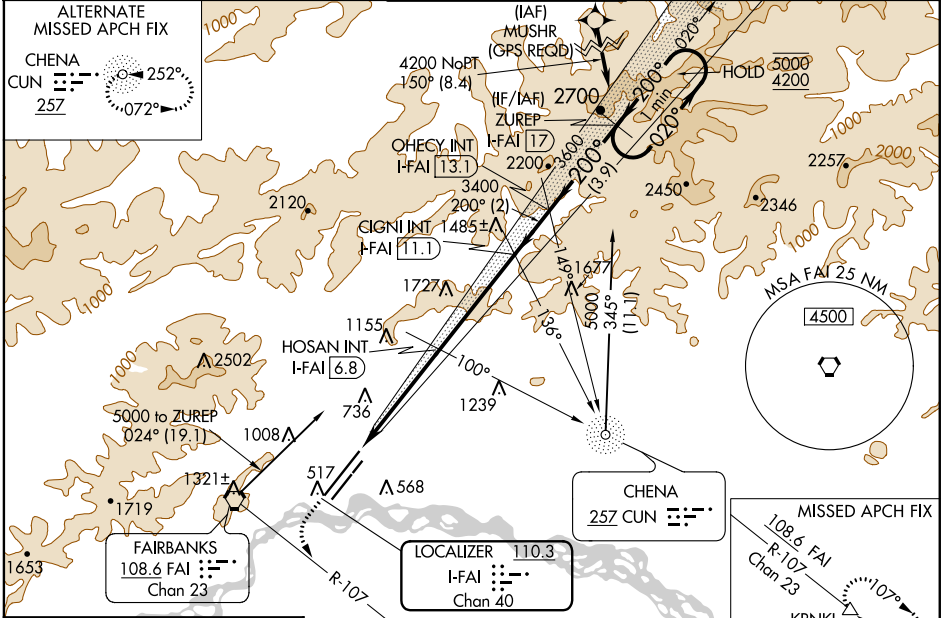
DME Required. DME required for procedure entry.

**MALSR**  
AS

MISSED APPROACH: Climb to 1100 then climbing left turn to 3000 on FAI VORTAC R-107 to KRNKL/FAI VORTAC 13 DME and hold.

**CAUTION**  
-32°C  
#RVR 1800 authorized with use of FD or AP or HUD to DA.

ATIS <b>124.4</b>	FAIRBANKS APP CON <b>125.35 363.2</b>	FAIRBANKS TOWER <b>118.3 257.8</b>	GND CON <b>121.9</b>	CLNC DEL <b>127.6</b>
----------------------	--	---------------------------------------	-------------------------	--------------------------



ELEV 439	<b>D</b>	TDZE 439	1100 3000 KRNKL VGSI and ILS glidepath not coincident (VGSI Angle 3.00/TCH 74) ZUREP FAI R-107 OHECY INT I-FAI 17 One Minute Holding Pattern Use I-FAI DME when on the localizer course. *LOC only * I-FAI 3.2 HOSAN INT I-FAI 6.8 CIGNI INT I-FAI 13.1 2020* 3400 3600 5000 4200 GS 3.00° TCH 56				
1.2	3.6 NM	4.3 NM	2 NM	3.9 NM			

CATEGORY	A	B	C	D	E
S-ILS 20R#	639/24 200 (200-½)				
S-LOC 20R	880/24	441 (500-½)	880/45 441 (500-¾)		
<b>C</b> CIRCLING	880-1 441 (500-1)	900-1 461 (500-1)	900-1½ 461 (500-1½)	1020-2 581 (600-2)	1060-2¼ 621 (700-2¼)

AK, 16 JUL 2020 to 10 SEP 2020

AK, 16 JUL 2020 to 10 SEP 2020