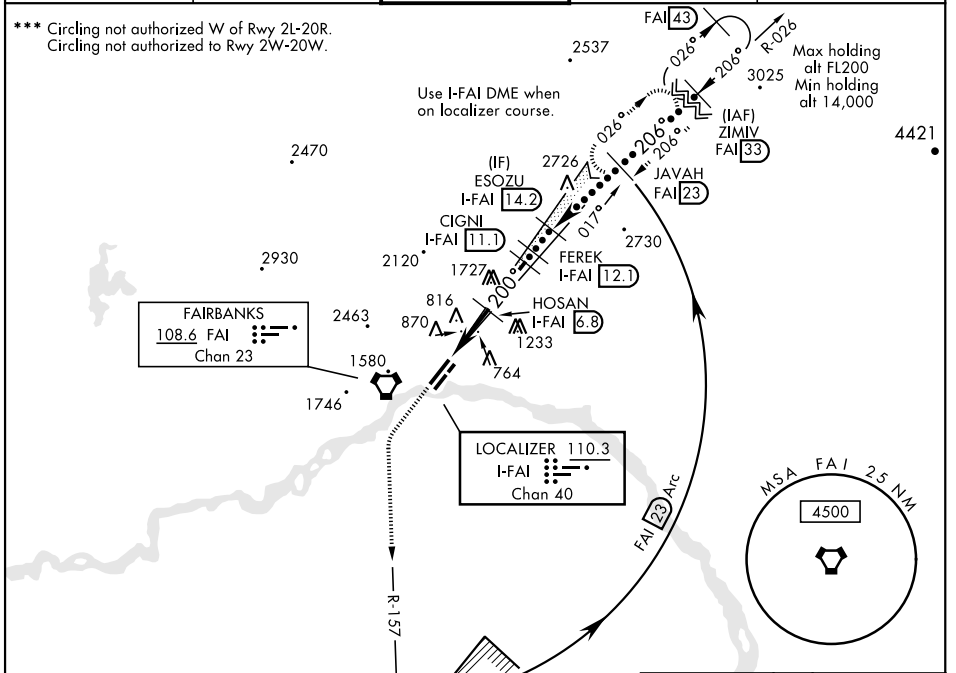


HI-ILS or LOC RWY 20R

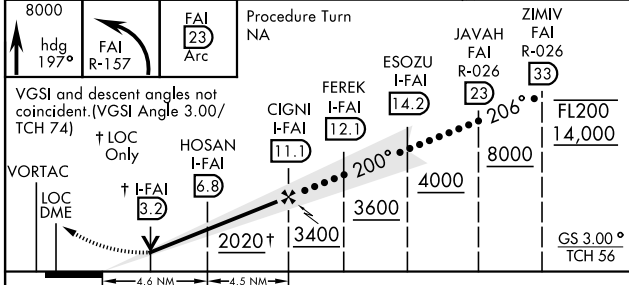
LOC/DME I-FAI 110.3 Chan 40	APCH CRS 200°	Rwy ldg 11,050 TDZE 439 Arprt Elev 439	JAL-1234 [USAF]	FAIRBANKS INTL (PAFA)
* When ALS inop, increase CAT E RVR to 40 and vis to 3/4 mile. ** When ALS inop, increase CAT E vis to 1 3/8 miles.			MALSR 	MISSED APPROACH: Climb to 8000 on heading 200° and FAI VORTAC R-157 to 23 DME, arc northbound to JAVAH/FAI VORTAC 23 DME and hold.

ATIS 124.4	FAIRBANKS APP CON 125.35 363.2	FAIRBANKS TOWER 118.3 257.8	GND CON 121.9	CLNC DEL 127.6
----------------------	--	---------------------------------------	-------------------------	--------------------------



DME REQUIRED
(For procedure entry)

EMERG SAFE ALT 100 NM 16,100



ELEV 439	TDZE 439
REIL Rwy 20L	200°
TDZL/CL Rwy 2L	9.1 NM from FAF
MIRL Rwy 2R-20L	
HIRL Rwy 2L- 20R	

CAUTION: Seaplane landing area 5400x100

Rwy 2L ldg 11,050'
Rwy 20R ldg 11,050'

CATEGORY	C	D	E
S-ILS 20R**	639/24	200 (200-1/2)	
S-LOC 20R**	880/45	441 (500-7/8)	
CIRCLING***	900-1 1/2 461 (500-1/2)	1020-2 581 (600-2)	1060-2 1/4 621 (700-2/4)

HI-ILS or LOC RWY 20R

AK, 16 JUL 2020 to 10 SEP 2020

AK, 16 JUL 2020 to 10 SEP 2020