

(GLEEN6.GLEEN) 19227

# GALENA SIX DEPARTURE

AL-1234 (FAA)

FAIRBANKS INTL (FAI) (PAFA)  
FAIRBANKS, ALASKA

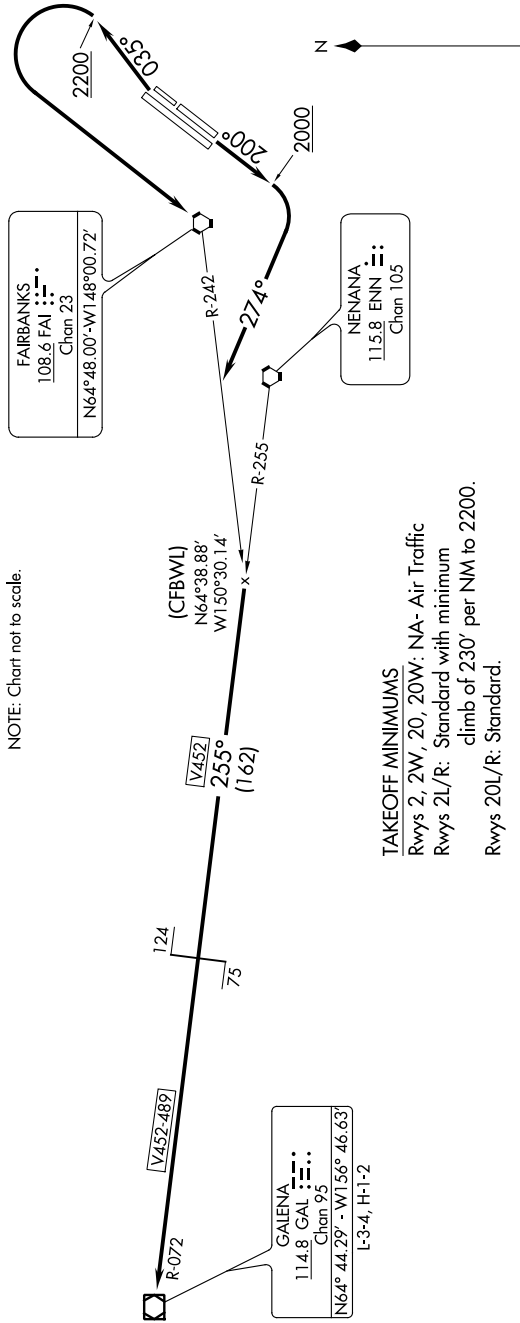
ATIS 124.4  
CLNC DEL 127.6  
GND CON 121.9  
FAIRBANKS TOWER  
118.3 257.8  
FAIRBANKS DEP CON  
125.35 363.2

## DEPARTURE ROUTE DESCRIPTION

**TAKEOFF RUNWAYS 2L/R:** Climb heading 035° to 2200, then left turn direct FAI VORTAC, thence . . .  
**TAKEOFF RUNWAYS 20L/R:** Climb heading 200° to 2000, then right turn heading 274°, thence . . .

. . . intercept FAI R-242 to ENN R-255, then on ENN R-255 and GAL R-072 to GAL VOR/DME, then continue climb on assigned route and altitude.

NOTE: Chart not to scale.



## TAKEOFF MINIMUMS

Rwys 2, 2W, 20, 20W: NA - Air Traffic  
Rwys 2L/R: Standard with minimum  
climb of 230' per NM to 2200.  
Rwys 20L/R: Standard.

NOTE: DME Required

# GALENA SIX DEPARTURE

(GLEEN6.GLEEN) 15AUG19

FAIRBANKS, ALASKA  
FAIRBANKS INTL (FAI) (PAFA)

AK, 16 JUL 2020 to 10 SEP 2020

AK, 16 JUL 2020 to 10 SEP 2020