

(DRRL3.DRRL) 19227

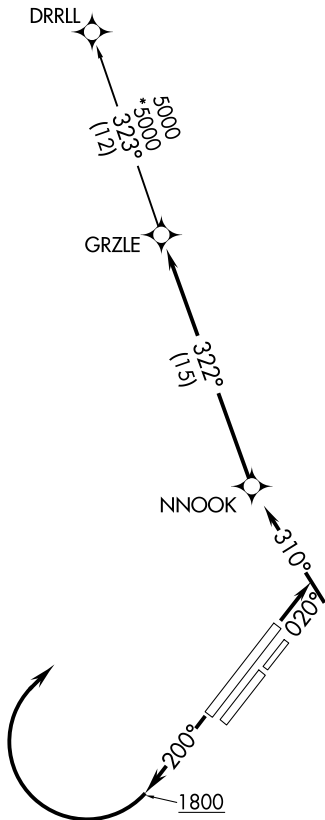
# DRRL THREE DEPARTURE (RNAV)

AL-1234 (FAA)

FAIRBANKS INTL (FAI) (PAFA)  
FAIRBANKS, ALASKA

ATIS 124.4  
CLNC DEL  
127.6  
GND CON  
121.9  
FAIRBANKS TOWER  
118.3 257.8  
FAIRBANKS DEP CON  
125.35 363.2

**TOP ALTITUDE:  
ASSIGNED BY ATC**



NOTE: GPS required.  
NOTE: RNAV-1.

### TAKEOFF MINIMUMS

Rwys 2, 2R, 2W, 20, 20L, 20W: NA - Air Traffic.  
Rwy 2L: Standard with minimum climb of 290' per NM to 3100.  
Rwy 20R: Standard with minimum climb of 270' per NM to 3200.

NOTE: Chart not to scale.

### DEPARTURE ROUTE DESCRIPTION

TAKEOFF RUNWAY 2L: Climb heading 020° to intercept course 310° to NNOOK, then on track 322° to GRZLE, thence . . .  
TAKEOFF RUNWAY 20R: Climb heading 200° to 1800, then climbing right turn direct NNOOK, then on track 322° to GRZLE, thence . . .

. . . on DRRLL TRANSITION, maintain ATC assigned altitude, expect filed altitude ten minutes after departure.

DRRL TRANSITION (DRRL3.DRRL)

DRRL THREE DEPARTURE (RNAV)  
(DRRL3.DRRL) 15AUG19

FAIRBANKS, ALASKA  
FAIRBANKS INTL (FAI) (PAFA)

AK, 16 JUL 2020 to 10 SEP 2020

AK, 16 JUL 2020 to 10 SEP 2020