

WAAS CH 77707 W26A	APP CRS 257°	Rwy ldg 5200 TDZE 154 Apt Elev 154
--	------------------------	---

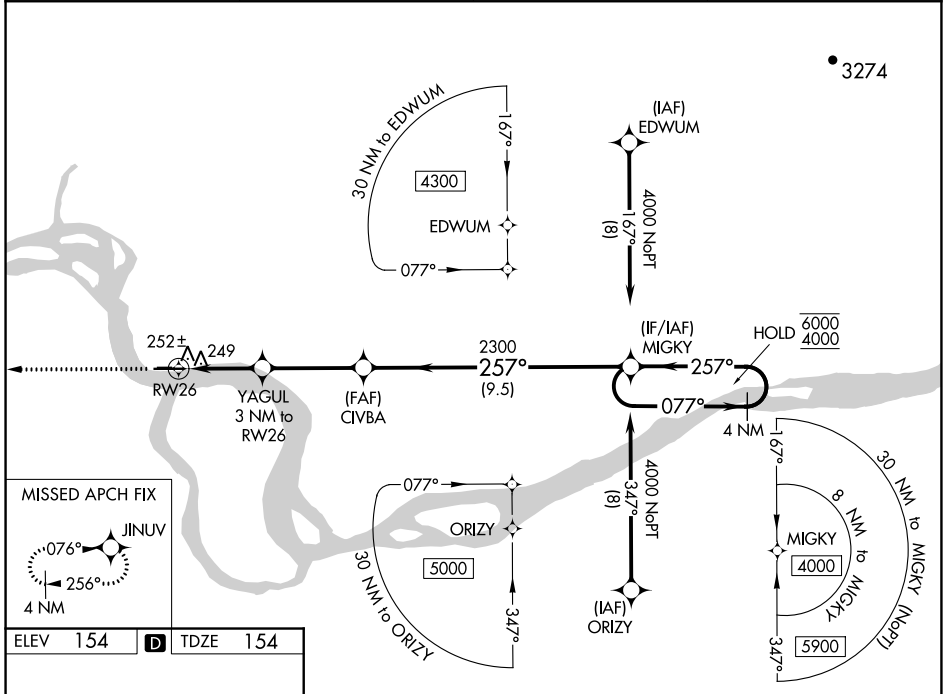
RNAV (GPS) RWY 26

EDWARD G PITKA SR (GAL)(PAGA)

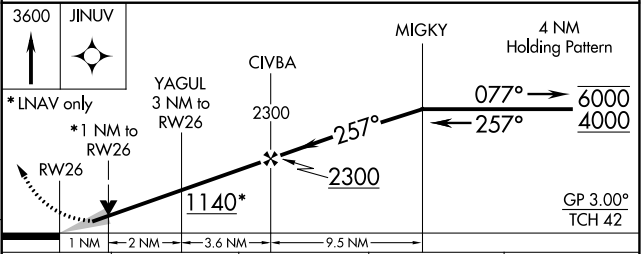
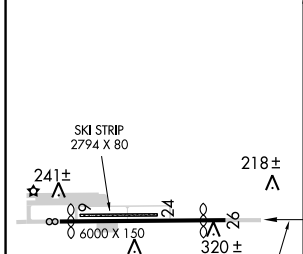
RNP APCH.
 For uncompensated Baro-VNAV systems, LNAV/VNAV NA below -20°C or above 54°C.
 -33°C

MISSED APPROACH: Climb to 3600 direct JINUV and hold, continue climb-in-hold to 3600.

AWOS-3P 132.525	ANCHORAGE CENTER 127.0 290.2	FAIRBANKS RADIO 122.2	CTAF 123.0
---------------------------	--	---------------------------------	----------------------



ELEV 154	D	TDZE 154
----------	----------	----------



CATEGORY	A	B	C	D
LPV DA		404-1	250 (300-1)	
LNAV/VNAV DA		414-1	260 (300-1)	
LNAV MDA		520-1	366 (400-1)	
C CIRCLING	560-1 406 (500-1)	620-1 466 (500-1)	620-1½ 466 (500-1½)	720-2 566 (600-2)

AK, 16 JUL 2020 to 10 SEP 2020

AK, 16 JUL 2020 to 10 SEP 2020