

NDB ICW <b>525</b>	APP CRS <b>051°</b>	Rwy Idg <b>4600</b>
		TDZE <b>368</b>
		Apt Elev <b>368</b>

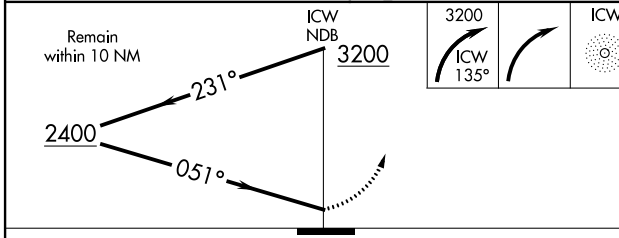
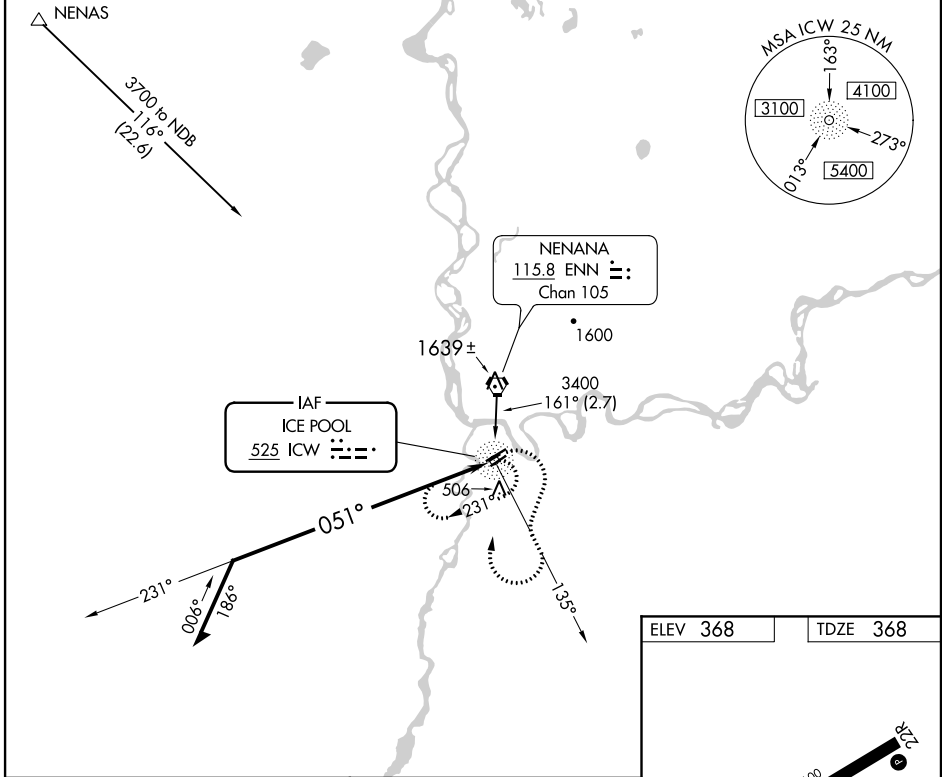
# NDB RWY 4L

NENANA MUNI (ENN)(PANN)

**⚠** Circling NA northwest of Rwy 4L-22R. When local altimeter setting not received, use Fairbanks Intl altimeter setting and increase all MDAs 100 feet and visibility Cat C and Circling Cat D ¼ SM. Procedure NA at night. **⚠** Circling NA to Rwy's 4R, 22L, 4W and 22W. Rwy 4L helicopter visibility reduction below 1 SM NA.

**MISSED APPROACH:** Climbing right turn to 3200 on ICW NDB 135° bearing, then right turn direct ICW NDB and hold.

ASOS <b>125.2</b>	FAIRBANKS APP CON <b>125.35 363.2</b>	FAIRBANKS RADIO <b>122.5</b>	CTAF <b>122.1</b>
----------------------	--	---------------------------------	----------------------



ELEV 368	TDZE 368
----------	----------

MIRL Rwy's 4L-22R and 4R-22L  
REIL Rwy's 4L and 22R

CATEGORY	A	B	C	D
S-4L	1000-1	632 (700-1)	1000-1¾ 632 (700-1¾)	1000-2 632 (700-2)
CIRCLING	1000-1	632 (700-1)	1000-1¾ 632 (700-1¾)	1000-2 632 (700-2)

AK, 16 JUL 2020 to 10 SEP 2020

AK, 16 JUL 2020 to 10 SEP 2020