

APP CRS	Rwy Idg	<b>3500</b>
<b>171°</b>	TDZE	<b>365</b>
	Apt Elev	<b>365</b>

# RNAV (GPS) RWY 19

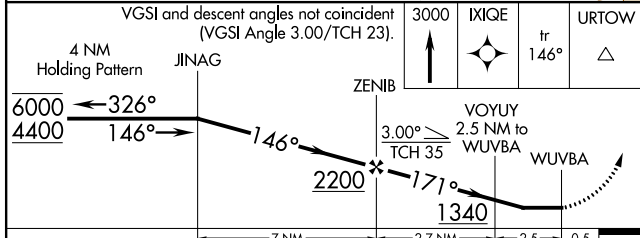
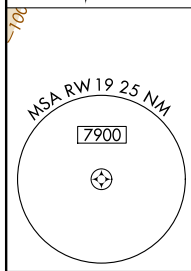
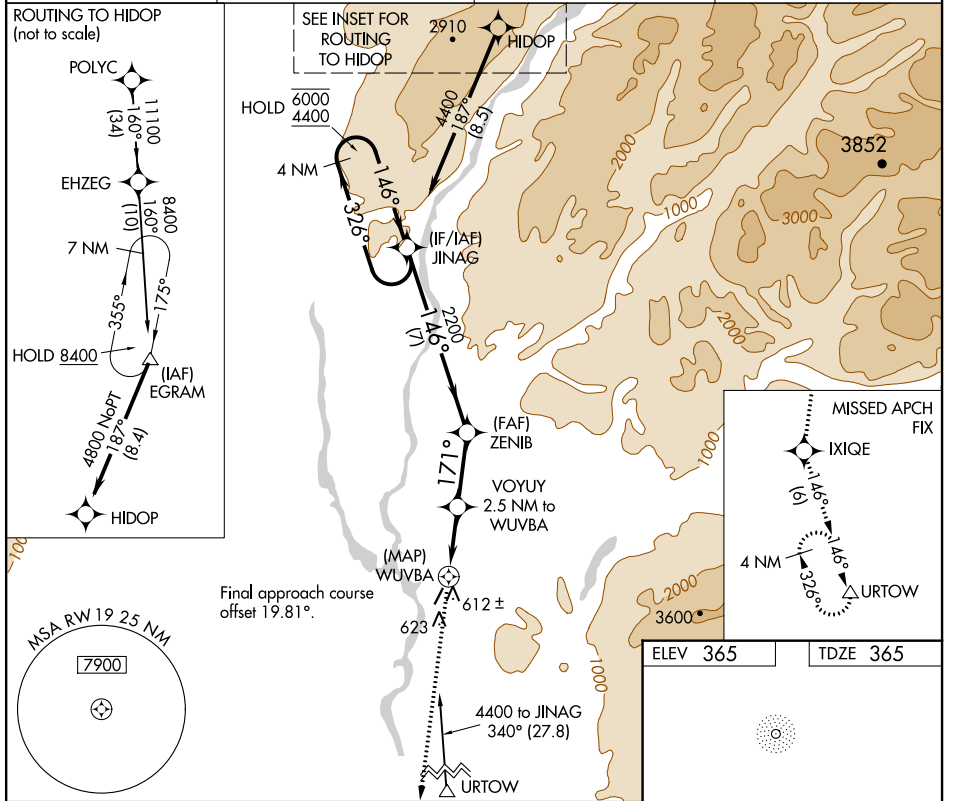
TALKEETNA(TKA)(PATK)

RNP APCH.

**V** Circling NA east of Rwy 1-19. Rwy 19 helicopter visibility reduction below 1 SM NA. Straight-in Rwy 19 NA at night. Circling Rwy 19 NA at night.

**MISSED APPROACH:** Climb to 3000 direct IXIQE and on track 146° to URTOW and hold.

AFIS <b>135.2</b>	ANCHORAGE CENTER <b>125.55 254.3</b>	TALKEETNA RADIO <b>123.6 (CTAF) 0</b>	UNICOM <b>123.0</b>
----------------------	---	--	------------------------



ELEV 365	TDZE 365
----------	----------

MIRL Rwy 1-19 0

CATEGORY	A	B	C	D
LNAV MDA	880-1	515 (600-1)	880-1 $\frac{3}{8}$	515 (600-1 $\frac{3}{8}$ )
<b>C</b> CIRCLING	880-1	515 (600-1)	1040-2 675 (700-2)	1200-2 $\frac{3}{4}$ 835 (900-2 $\frac{3}{4}$ )

AK, 16 JUL 2020 to 10 SEP 2020

AK, 16 JUL 2020 to 10 SEP 2020