

APP CRS	Rwy Idg	3500
011°	TDZE	363
	Apt Elev	365

RNAV (GPS) RWY 1

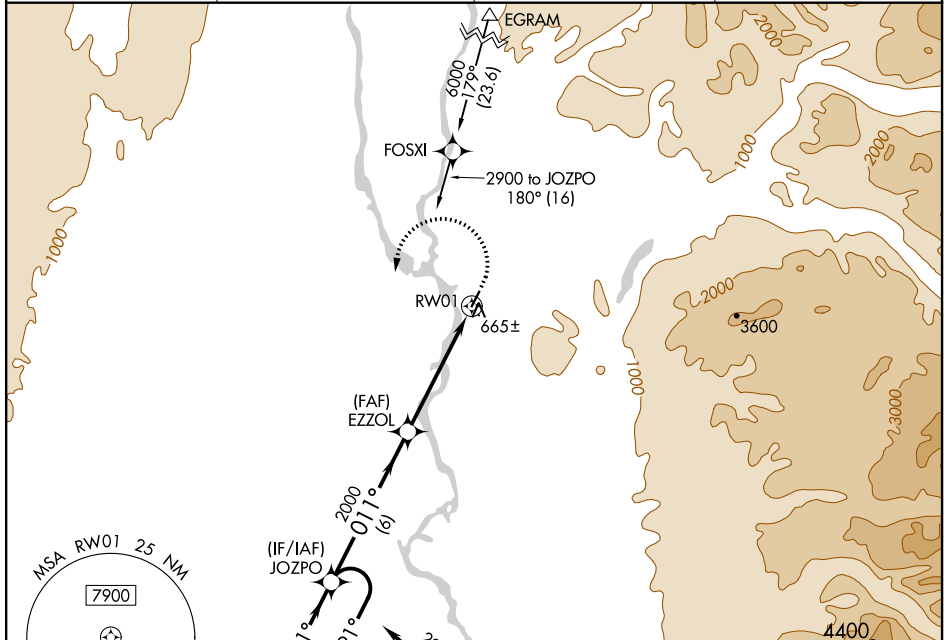
TALKEETNA(TKA)(PATK)

RNP APCH.

V Circling NA east of Rwy 1-19. Rwy 1 helicopter visibility reduction below 3/4 SM NA.
A For uncompensated Baro-VNAV systems, LNAV/VNAV NA below -20°C or above 54°C.

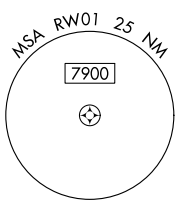
MISSED APPROACH: Climb to 800 then climbing left turn to 2900 direct JOZPO and hold.

AFIS 135.2	ANCHORAGE CENTER 125.55 254.3	TALKEETNA RADIO 123.6 (CTAF) 0	UNICOM 123.0
----------------------	---	--	------------------------

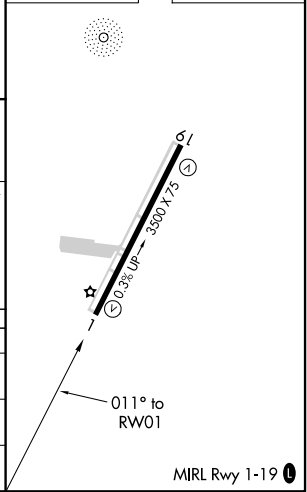
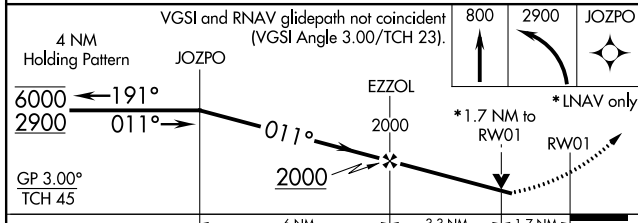


AK, 16 JUL 2020 to 10 SEP 2020

AK, 16 JUL 2020 to 10 SEP 2020



ELEV 365	TDZE 363
----------	----------



CATEGORY	A	B	C	D
LNAV/VNAV DA	922-2 559 (600-2)			
LNAV MDA	920-1 557 (600-1)	920-1 5/8 557 (600-1 5/8)		
C CIRCLING	960-1 595 (600-1)	1040-2 675 (700-2)	1200-2 3/4 835 (900-2 3/4)	