

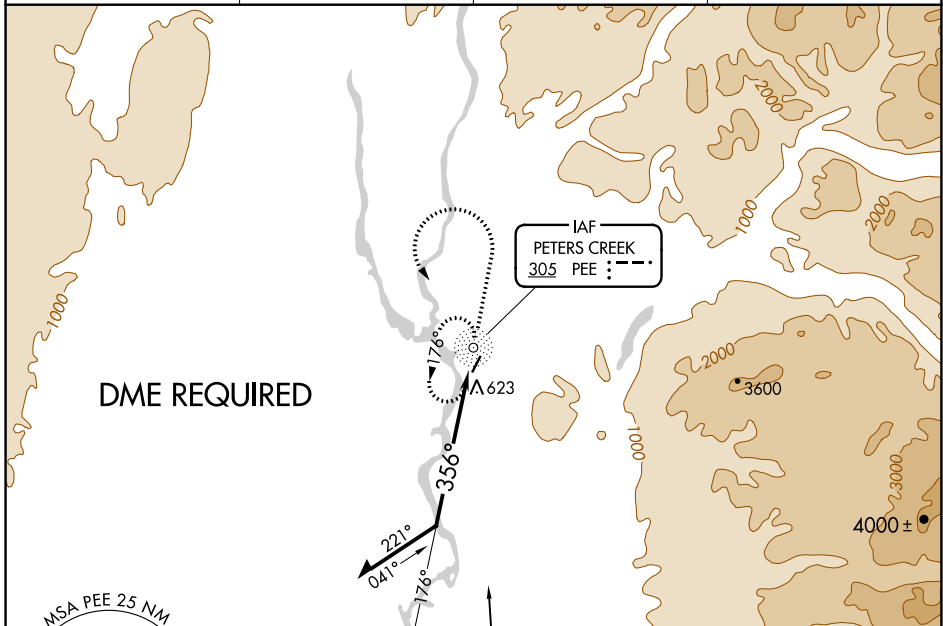
NDB PEE 305	APP CRS 356°	Rwy Idg 3500
		TDZE 363
		Apt Elev 365

NDB RWY 1 TALKEETNA (TKA)(PATK)

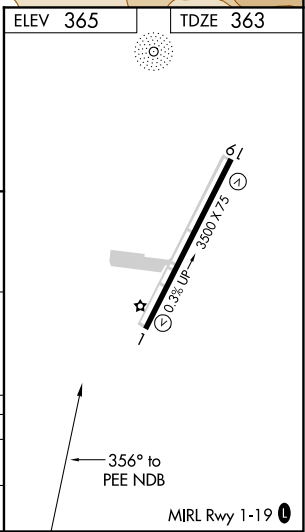
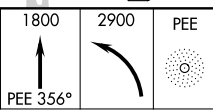
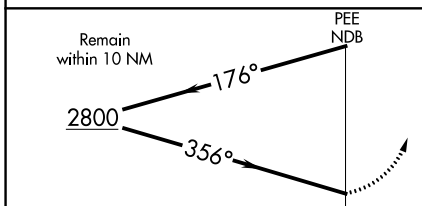
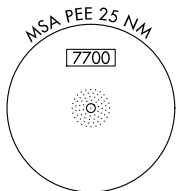
⚠ Circling NA east of Rwy 1-19.
⚠ Straight-in Rwy 1 NA at night, Circling Rwy 1 NA at night.
 Rwy 1 helicopter visibility reduction below 1 SM NA.

MISSED APPROACH: Climb to 1800 on 356° bearing from PEE NDB, then climbing left turn to 2900 direct PEE NDB and hold, continue climb-in-hold to 2900.

AFIS 135.2	ANCHORAGE CENTER 125.55 254.3	TALKEETNA RADIO 123.6 (CTAF) 0	UNICOM 123.0
----------------------	---	--	------------------------



DME REQUIRED



CATEGORY	A	B	C	D
S-1	1300-1¼ 937 (1000-1¼)		1300-2½ 937 (1000-2½)	
C CIRCLING	1300-1¼ 935 (1000-1¼)		1300-2¾ 935 (1000-2¾)	1300-3 935 (1000-3)

AK, 16 JUL 2020 to 10 SEP 2020

AK, 16 JUL 2020 to 10 SEP 2020