


| | | | |
|--|------------------------|---|-------------|
| WAAS CH 56430 W06A | APP CRS 058° | Rwy Idg TDZE 186 Apt Elev 213 | 6006 |
|--|------------------------|---|-------------|

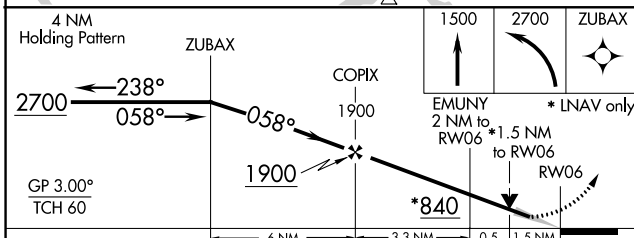
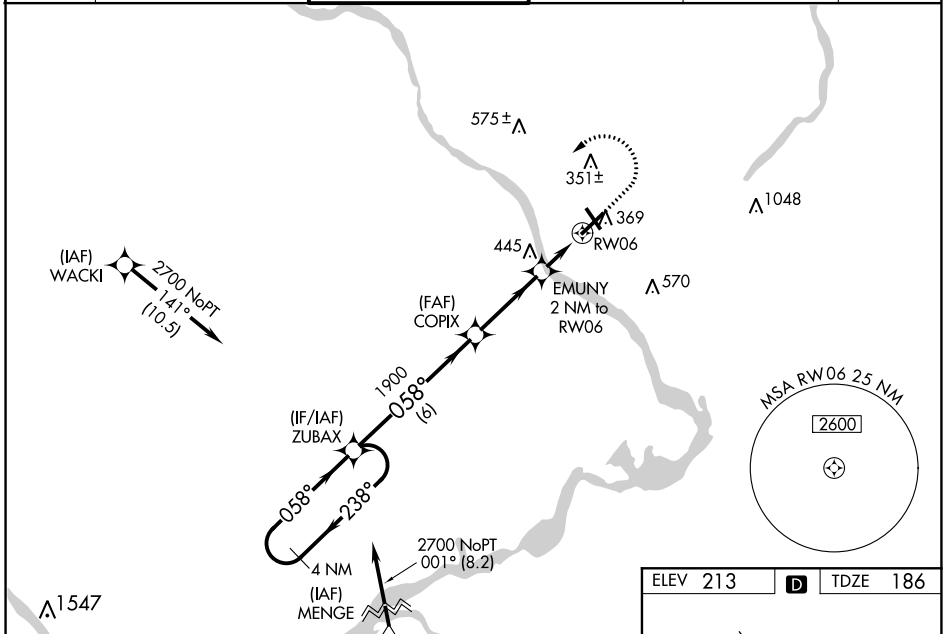
RNAV (GPS) Z RWY 6

TRENTON MERCER (TTN)

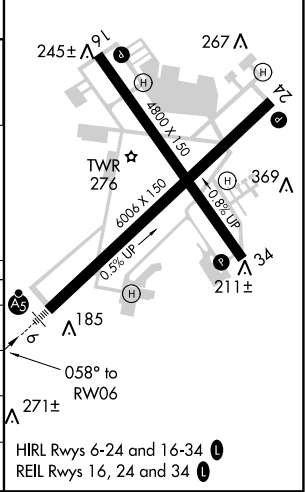
▼ Baro-VNAV NA when using Northeast Philadelphia altimeter setting. For uncompensated Baro-VNAV systems, LNAV/VNAV NA below -13°C (8°F) or above 54°C (130°F). DME/DME RNP-0.3 NA. When local altimeter setting not received use Northeast Philadelphia altimeter setting: increase LPV DA to 435 feet; increase LNAV/VNAV DA to 658 feet, and all Cats visibility 1/8 SM; increase all MDA 60 feet and LNAV Cat C/D visibility 1/4 SM and Circling Cat C visibility 1/4 SM. Night Landing: Rwy 34 operational VGSI required, remain on or above VGSI glidepath until threshold.

MALSR

MISSED APPROACH:
 Climb to 1500 then climbing left turn to 2700 direct ZUBAX and hold.

| | | | | | |
|------------------------|--|--|-------------------------------|--------------------------------|-------------------------|
| ATIS 126.775 | PHILADELPHIA APP CON 123.8 291.7 | TRENTON TOWER * 120.7 (CTAF) 0 257.8 | GND CON 121.9 257.8 | CLNC DEL 121.9 257.8 | UNICOM 122.95 |
|------------------------|--|--|-------------------------------|--------------------------------|-------------------------|



| | | |
|----------|----------|----------|
| ELEV 213 | D | TDZE 186 |
|----------|----------|----------|



| CATEGORY | A | B | C | D |
|-------------------|---------|---------------|----------------------------|----------------------------|
| LPV DA | | 388-1/2 | 202 (200-1/2) | |
| LNAV/VNAV DA | | 611-7/8 | 425 (400-7/8) | |
| LNAV MDA | 700-1/2 | 514 (500-1/2) | 700-1 | 514 (500-1) |
| C CIRCLING | 700-1 | 487 (500-1) | 760-1 1/2 547 (600-1/2) | 960-2 1/2 747 (800-2/2) |

NE-2, 16 JUL 2020 to 13 AUG 2020

NE-2, 16 JUL 2020 to 13 AUG 2020