

VOR/DME ATR 112.6 Chan 73	APP CRS 234°	Rwy Ldg 5331 TDZE 51 Apt Elev 50
---	------------------------	---

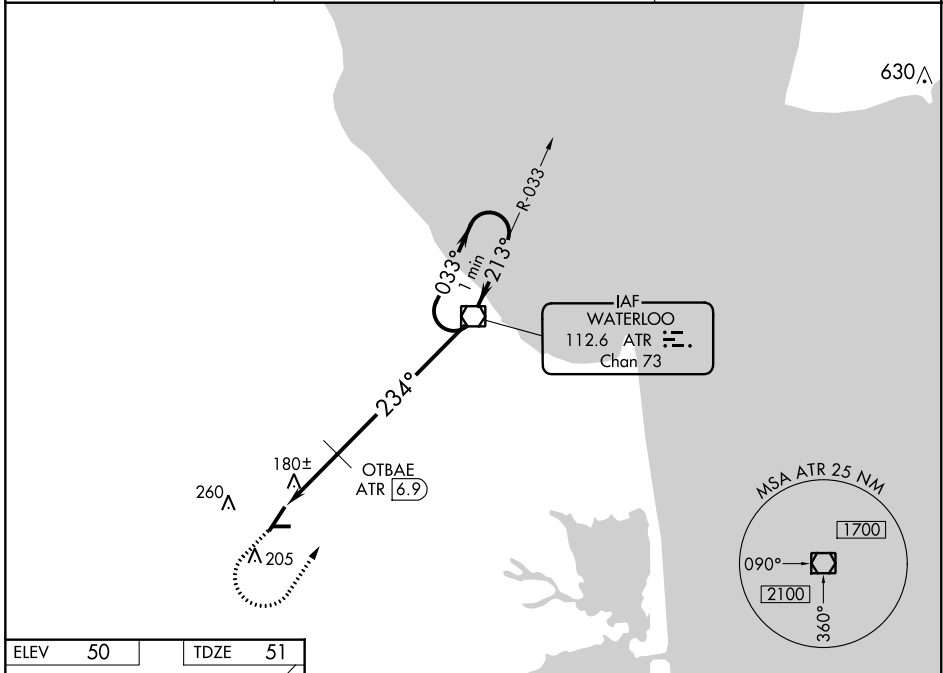
VOR RWY 22

DELAWARE COASTAL (GED)

- ▼ When local altimeter setting not received, use Salisbury altimeter setting and increase all MDA 60 feet; increase S-22 and Circling Cats C/D visibility ¼ mile;
- ▲ OTBAE fix minimums increase S-22 and Circling Cats C/D visibility ¼ mile. Circling Rwy 10, 28 NA at night.

MISSED APPROACH: Climb to 800 then climbing left turn to 3000 direct ATR VOR/DME and hold.

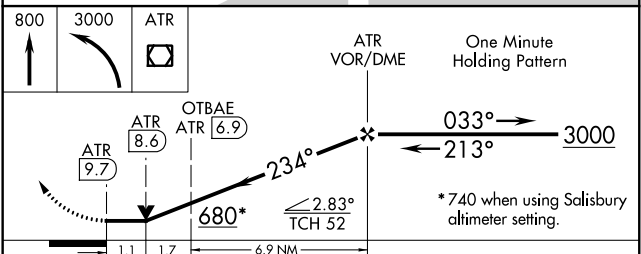
ASOS 118.375	DOVER APP CON 132.425 257.875	UNICOM 123.0 (CTAF) 0
------------------------	---	--



NE-3, 16 JUL 2020 to 13 AUG 2020

NE-3, 16 JUL 2020 to 13 AUG 2020

ELEV 50	TDZE 51
234° 9.7 NM from FAF	
REIL Rwy 4, 22, 10 and 28	
MIRL Rwy 4-22 and 10-28	
FAF to MAP 9.7 NM	
Knots	60 90 120 150 180
Min:Sec	9:42 6:28 4:51 3:53 3:14



CATEGORY	A		B		C		D	
	S-22	680-1	629 (700-1)	680-1¾	629 (700-1¾)	680-1¾	629 (700-1¾)	629 (700-1¾)
C CIRCLING	680-1	630 (700-1)	720-1¾	670 (700-1¾)	720-2	670 (700-2)	720-2	670 (700-2)
OTBAE FIX MINIMUMS								
S-22	440-1	389 (400-1)	440-1⅛	389 (400-1⅛)	440-1⅛	389 (400-1⅛)	440-1⅛	389 (400-1⅛)
C CIRCLING	560-1	510 (600-1)	580-1	530 (600-1)	720-1¾	670 (700-1¾)	720-2	670 (700-2)