

VOR/DME PVW <b>112.9</b> Chan <b>76</b>	APP CRS <b>024°</b>	Rwy Idg <b>5997</b> TDZE <b>3374</b> Apt Elev <b>3374</b>
---	------------------------	---

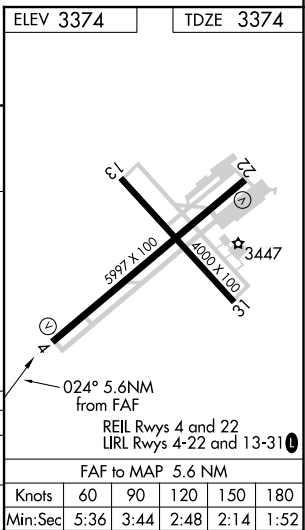
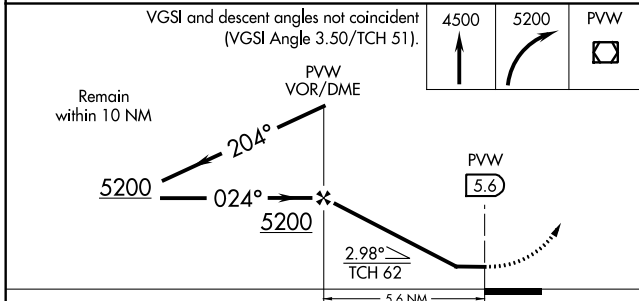
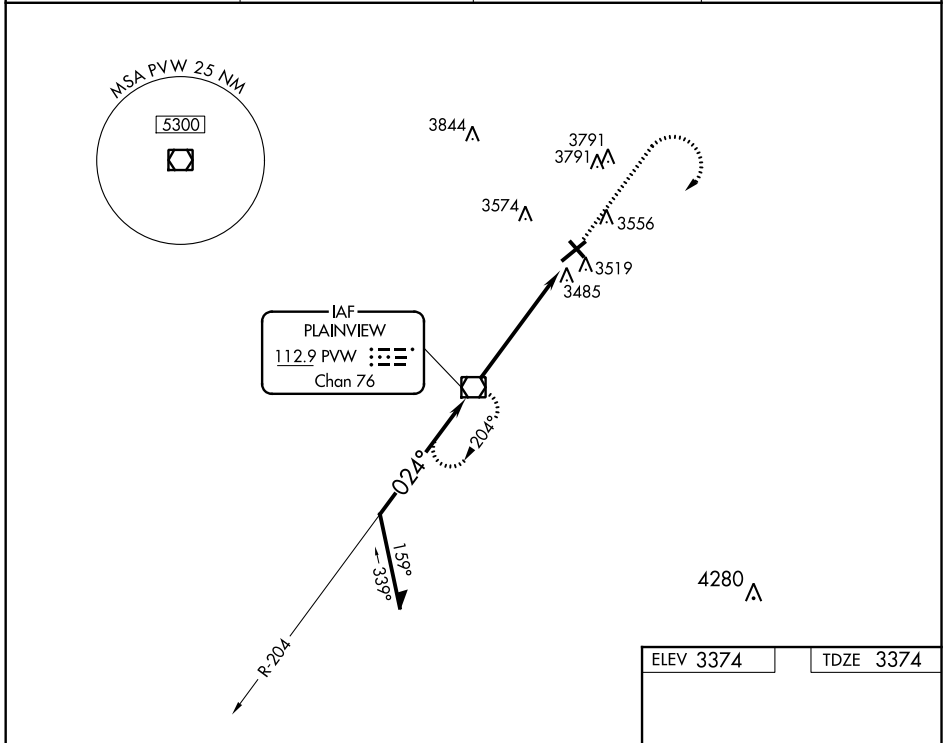
# VOR RWY 4

HALE COUNTY (PVW)

**NA** When local altimeter setting not received, use Lubbock altimeter setting and increase all MDA, 100 feet, increase S-4 visibility Cat C to 1½, Cat D and Circling Cat C to 1¼. Helicopter visibility reduction below ¾ mile NA.

**MISSED APPROACH:** Climb to 4500, then climbing right turn to 5200 direct PVW VOR/DME and hold.

ASOS <b>119.675</b>	LUBBOCK APP CON <b>119.2 351.8</b>	CINC DEL <b>121.7</b>	UNICOM <b>123.0 (CTAF)</b>
------------------------	---------------------------------------	--------------------------	-------------------------------



CATEGORY	A	B	C	D
S-4	3840-1	466 (500-1)	3840-1½	466 (500-1½)
CIRCLING	3920-1 546 (600-1)	3940-1 566 (600-1)	3940-1½ 566 (600-1½)	3940-2 566 (600-2)

SC-2, 16 JUL 2020 to 13 AUG 2020

SC-2, 16 JUL 2020 to 13 AUG 2020