

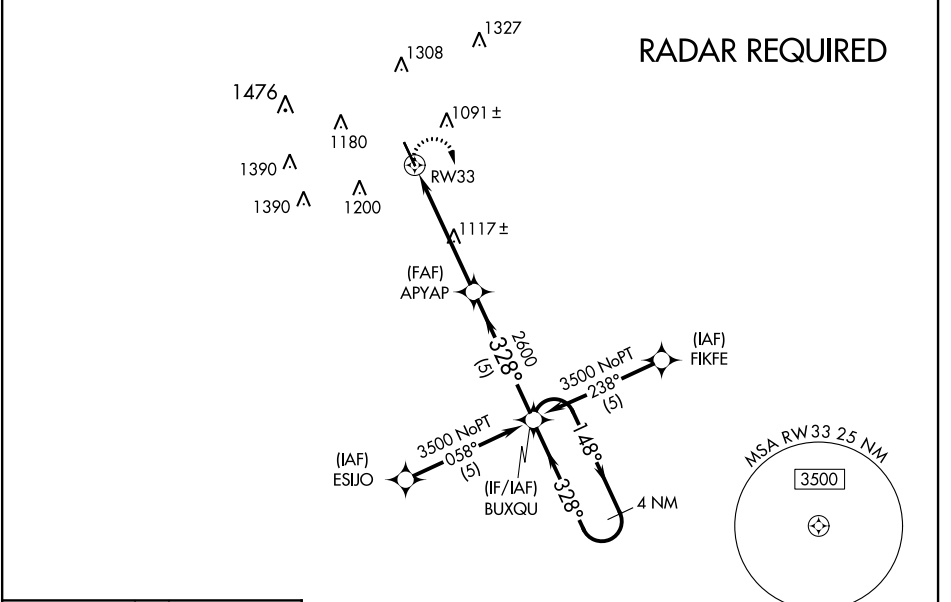
APP CRS 328°	Rwy Idg 5256 TDZE 933 Apt Elev 942
------------------------	---

RNAV (GPS) RWY 33

GARNER FIELD (UVA)

▼ ▲	When local altimeter setting not received, use South Texas Rgnl at Hondo altimeter setting and increase all MDA 100 feet and increase LNAV Cat C and D and Circling Cat C visibility ¼ mile. DME/DME RNP-0.3 NA.	MISSED APPROACH: Climbing right turn to 3500 direct BUXQU WP and hold.
--------	--	---

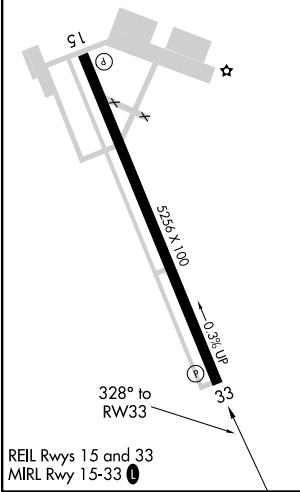
AWOS-3 124.175	HOUSTON CENTER 134.95 269.4	UNICOM 122.8 (CTAF) 0
--------------------------	---------------------------------------	---------------------------------



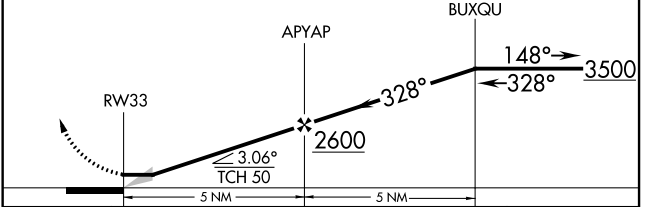
SC-3, 16 JUL 2020 to 13 AUG 2020

SC-3, 16 JUL 2020 to 13 AUG 2020

ELEV 942	TDZE 933
-----------------	-----------------



3500 ↖	BUXQU ✧	VGSI and descent angle not coincident (VGSI Angle 3.00/TCH 35).	4 NM Holding Pattern
-----------	------------	--	-------------------------



CATEGORY	A	B	C	D
GLS DA			NA	
LNAV/VNAV DA	NA			
LNAV MDA	1380-1 447 (500-1)		1380-1¼ 447 (500-1¼)	1380-1½ 447 (500-1½)
CIRCLING	1380-1 438 (500-1)	1460-1 518 (600-1)	1460-1½ 518 (600-1½)	1500-2 558 (600-2)