

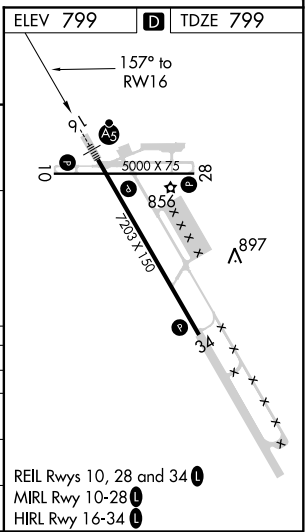
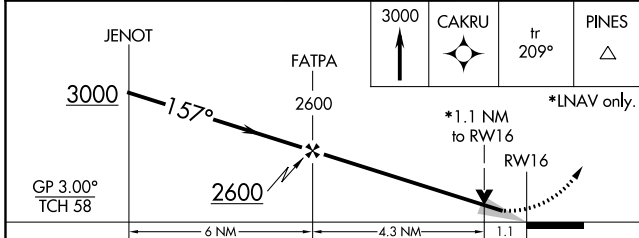
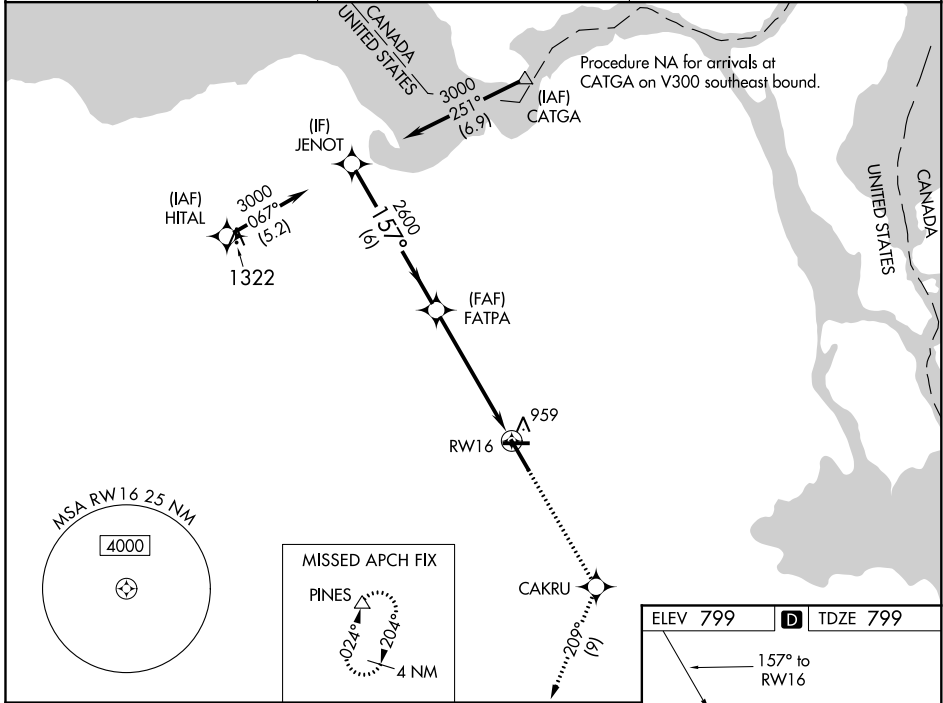
WAAS CH 69215 W16A	APP CRS 157°	Rwy Idg TDZE Apt Elev	7203 799 799
--	------------------------	-----------------------------	---

RNAV (GPS) RWY 16

CHIPPEWA COUNTY INTL (CIU)

RNP APCH.	MALSR	MISSED APPROACH: Climb to 3000 direct CAKRU and on track 209° to PINES and hold.
<p>▼ For uncompensated Baro-VNAV systems, LNAV/VNAV NA below -16°C or above 54°C. For inop ALS, increase LPV all Cats, LNAV/VNAV all Cats and LNAV Cats A/B/C ½ mile; increase LNAV Cat D ¼ mile.</p>		

AWOS-3PT 127.575	TORONTO CENTER 132.65 344.5	UNICOM 123.0 (CTAF) ①
----------------------------	---------------------------------------	---------------------------------



CATEGORY	A	B	C	D
LPV DA	1068-½		269 (300-½)	
LNAV/VNAV DA	1204-1		405 (500-1)	
LNAV MDA	1220-½	421 (500-½)	1220-¾ 421 (500-¾)	1220-1 421 (500-1)
CIRCLING	1260-1	461 (500-1)	1260-1½ 461 (500-½)	1360-2 561 (600-2)

EC-1, 16 JUL 2020 to 13 AUG 2020

EC-1, 16 JUL 2020 to 13 AUG 2020