

LOM CI 400	APP CRS 337°	Rwy Idg 7203 TDZE 796 Apt Elev 799
----------------------	------------------------	--

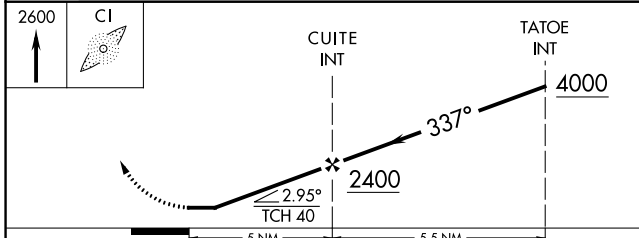
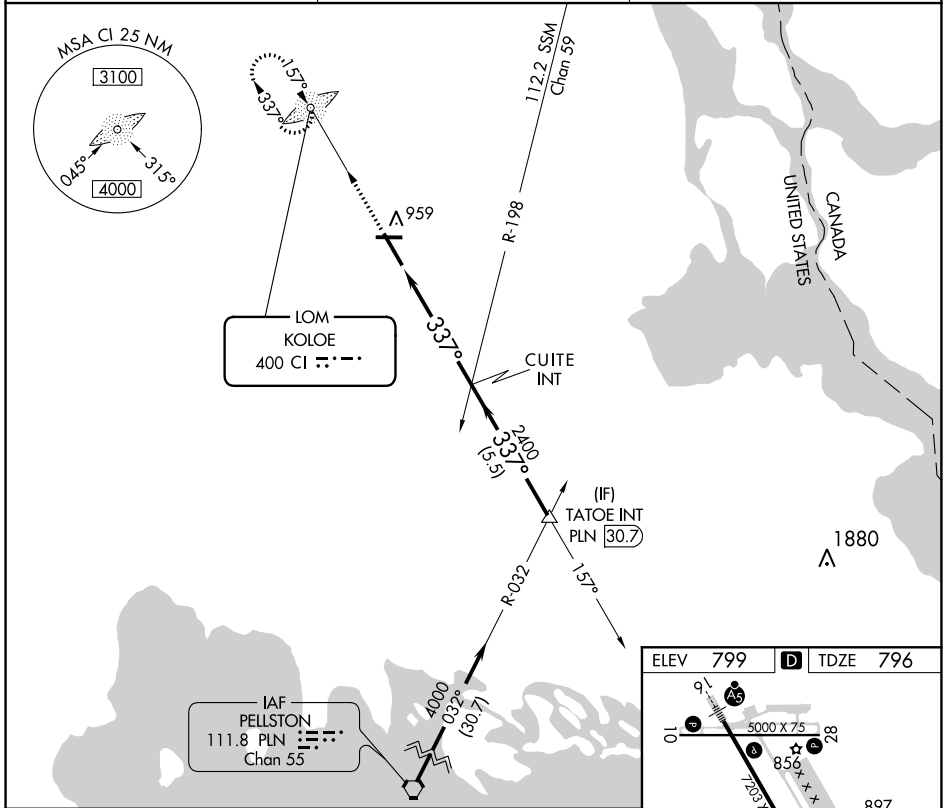
NDB RWY 34

CHIPPEWA COUNTY INTL (CIU)

⚠ NA When local altimeter setting not received, use Sault-Ste Marie Muni/Sanderson Field altimeter setting and increase all MDA 60 feet and increase S-34 Cat C/D visibility to 1 3/8.

MISSED APPROACH: Climb to 2600 direct KOLOE LOM and hold.

AWOS-3PT 127.575	TORONTO CENTER 132.65 344.5	UNICOM 123.0 (CTAF) 📻
----------------------------	---------------------------------------	--



ELEV 799	D	TDZE 796
----------	----------	----------

5000 x 75

28

856

7203 x 150

337° 5 NM from FAF

897

REIL Rwy 10, 28 and 34 **📻**

MIRL Rwy 10-28 **📻**

HIRL Rwy 16-34 **📻**

FAF to MAP 5 NM

Knots	60	90	120	150	180
Min:Sec	5:00	3:20	2:30	2:00	1:40

CATEGORY	A	B	C	D
S-34	1220-1	424 (500-1)	1220-1 1/4	424 (500-1 1/4)
CIRCLING	1260-1	461 (500-1)	1260-1 1/2	1360-2 461 (500-1 1/2) 561 (600-2)

EC-1, 16 JUL 2020 to 13 AUG 2020

EC-1, 16 JUL 2020 to 13 AUG 2020