

# RAVNN SIX ARRIVAL (RNAV) Transition Routes

BALTIMORE, MARYLAND

NE-3, 16 JUL 2020 to 13 AUG 2020

POTOMAC APP CON  
128.35 270.275  
BWI D-ATIS  
115.1 127.8

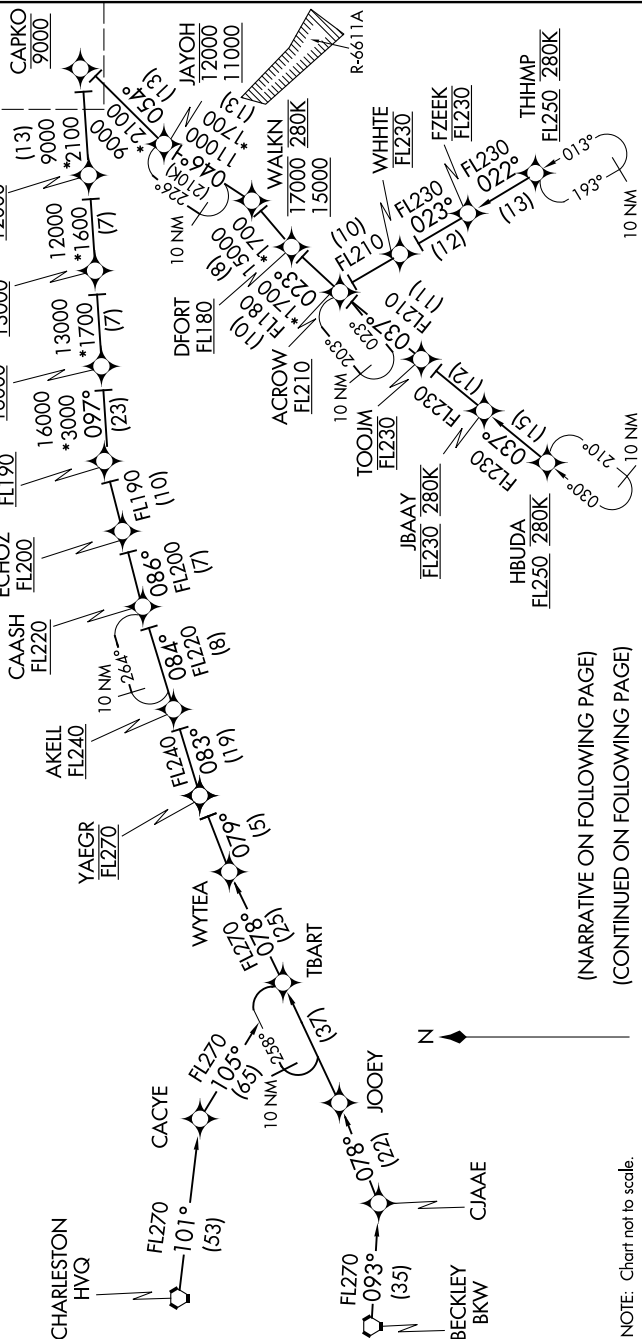
NOTE: RADAR required.  
NOTE: RNAV 1.  
NOTE: DME/DME/IRU or GPS required.  
NOTE: Turbojet aircraft only.  
NOTE: All part 91, 101, 103, 105, 125, 133, 135, and 137 flight operations are prohibited on the HVG/BKW/JOOEY transitions.

# RAVNN SIX ARRIVAL (RNAV) Transition Routes

BALTIMORE, MARYLAND

BECKLEY TRANSITION (BKW.RAVNN6)  
CHARLESTON TRANSITION (HVQ.RAVNN6)  
HBUDA TRANSITION (HBUDA.RAVNN6): (ATC assigned only).  
JOOEY TRANSITION (JOOEY.RAVNN6): (ATC assigned only).  
THHMP TRANSITION (THHMP.RAVNN6)

See following page for Arrival Routes.



(NARRATIVE ON FOLLOWING PAGE)  
(CONTINUED ON FOLLOWING PAGE)

NOTE: Chart not to scale.

NE-3, 16 JUL 2020 to 13 AUG 2020