


LOM AW 382	APP CRS 342°	Rwy Idg 5332
		TDZE 135
		Apt Elev 137

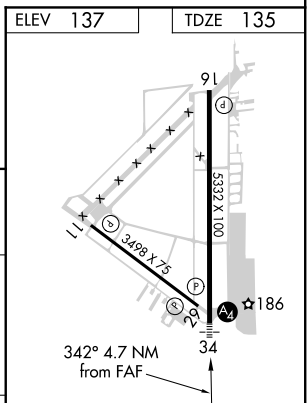
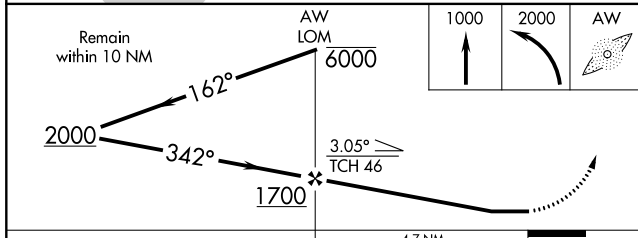
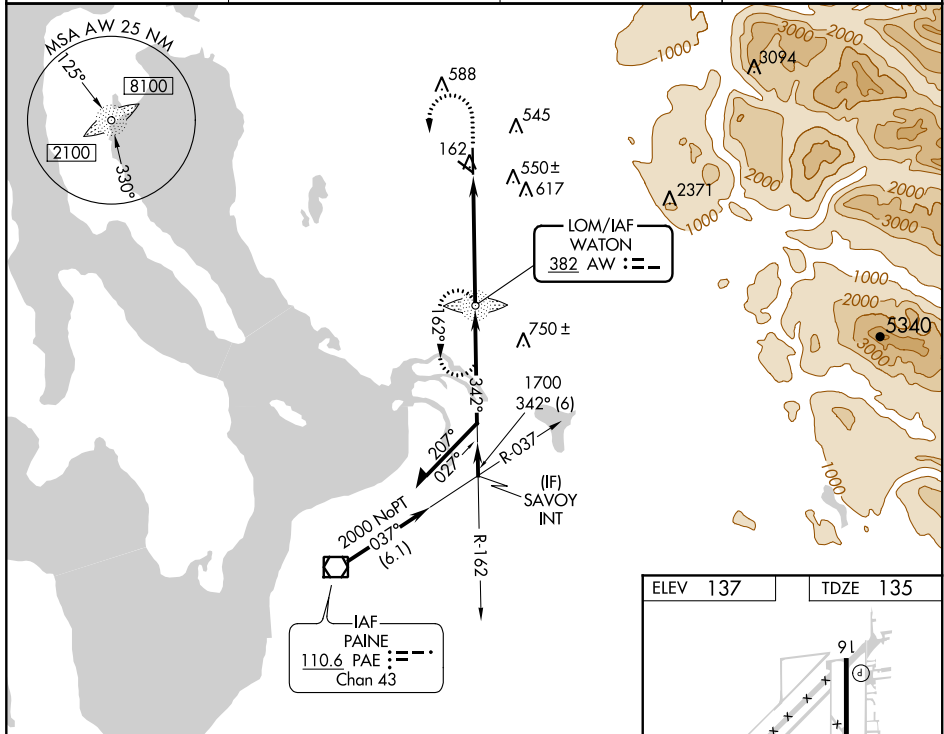
NDB RWY 34

ARLINGTON MUNI (AWO)

NA When local altimeter setting not received, use Whidbey Island NAS (Ault Field) altimeter setting and increase all MDA 80 feet and increase S-34 Cats B, C, and D visibility ¼ mile and increase Circling Cat B and D visibility ¼ mile and Cat C visibility ½ mile. For inoperative MALS, increase S-34 Cat D visibility to 2. For inoperative MALS when using Whidbey Island NAS (Ault Field) altimeter setting, increase S-34 Cats C and D visibility to 2½.

MALS

MISSED APPROACH: Climb to 1000 then climbing left turn to 2000 direct AW LOM and hold.

AWOS-3PT 135.625	SEATTLE APP CON 128.5 306.9	CLNC DEL 121.725	CTAF 122.725 0
----------------------------	---------------------------------------	----------------------------	--------------------------



CATEGORY	A	B	C	D
S-34	860-¾ 725 (800-¾)		860-1¾ 725 (800-1¾)	
CIRCLING	860-1 723 (800-1)		860-2 723 (800-2)	920-2½ 783 (800-2½)

MIRA Rwy 16-34
 REIL Rws 11, 16, and 29
 FAF to MAP 4.7 NM

Knots	60	90	120	150	180
Min:Sec	4:42	3:08	2:21	1:53	1:34

NW-1, 16 JUL 2020 to 13 AUG 2020

NW-1, 16 JUL 2020 to 13 AUG 2020