

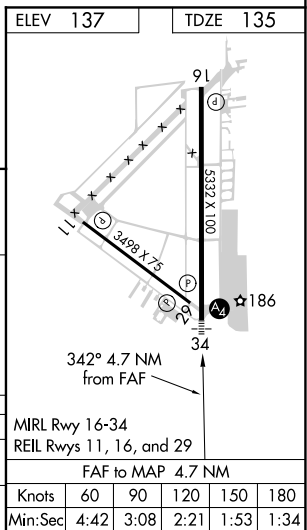
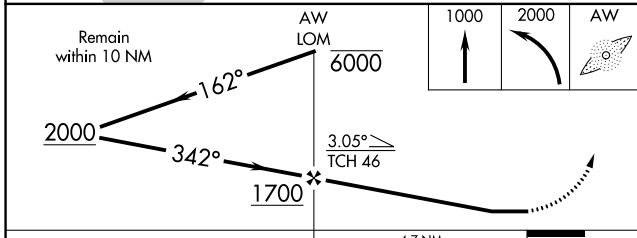
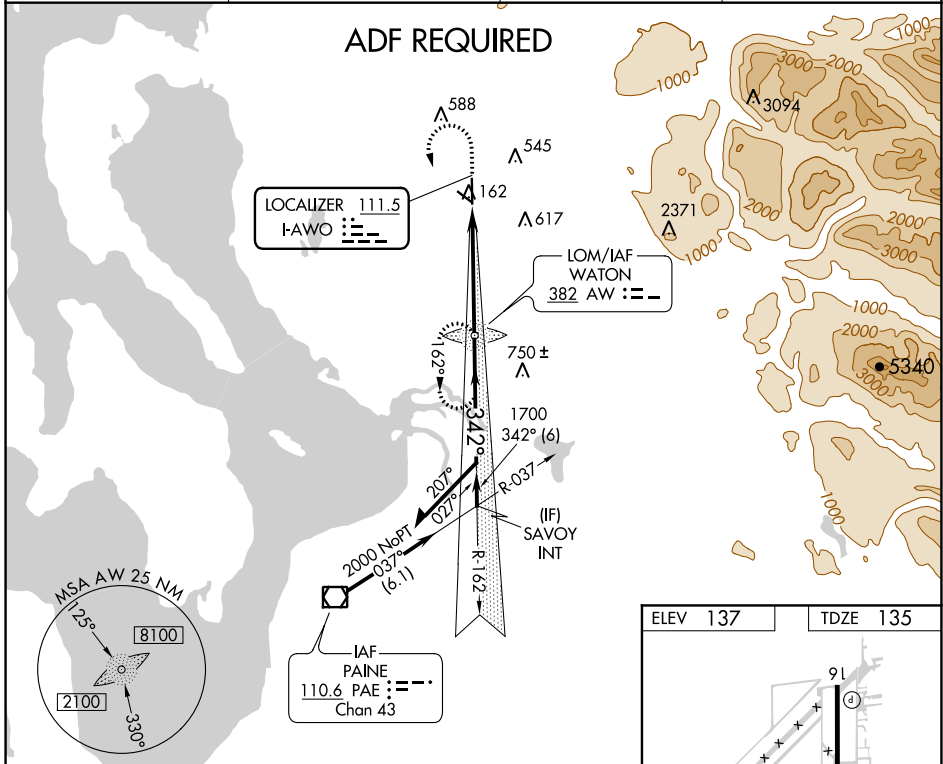
LOC I-AWO <b>111.5</b>	APP CRS <b>342°</b>	Rwy Idg <b>5332</b>
		TDZE <b>135</b>
		Apt Elev <b>137</b>

**LOC RWY 34**  
ARLINGTON MUNI (AWO)

**ADF REQUIRED.** When local altimeter setting not received use Whidbey Island NAS (Ault Field) altimeter setting and increase all MDA 80 feet and increase S-34 and Circling Cats C and D visibility ¼ mile. For inoperative MALS, increase S-34 Cats C and D visibility to 1¾. For inoperative MALS when using Whidbey Island NAS (Ault Field) altimeter setting, increase S-34 Cat D visibility to 1½.

**MALS**  
MISSED APPROACH: Climb to 1000 then climbing left turn to 2000 direct WATON LOM and hold.

AWOS-3PT <b>135.625</b>	SEATTLE APP CON <b>128.5 306.9</b>	CLNC DEL <b>121.725</b>	CTAF <b>122.725</b>
----------------------------	---------------------------------------	----------------------------	------------------------



CATEGORY	A	B	C	D
S-34	580-¾ 445 (500-¾)		580-1 445 (500-1)	
CIRCLING	800-1 663 (700-1)	860-1 723 (800-1)	860-2 723 (800-2)	920-2½ 783 (800-2½)

NW-1, 16 JUL 2020 to 13 AUG 2020

NW-1, 16 JUL 2020 to 13 AUG 2020