

MARYSVILLE, CALIFORNIA

RNAV (GPS) RWY 15

APCH CRS	Rwy Idg	12,001
145°	THRE	113
	Arprt Elev	113

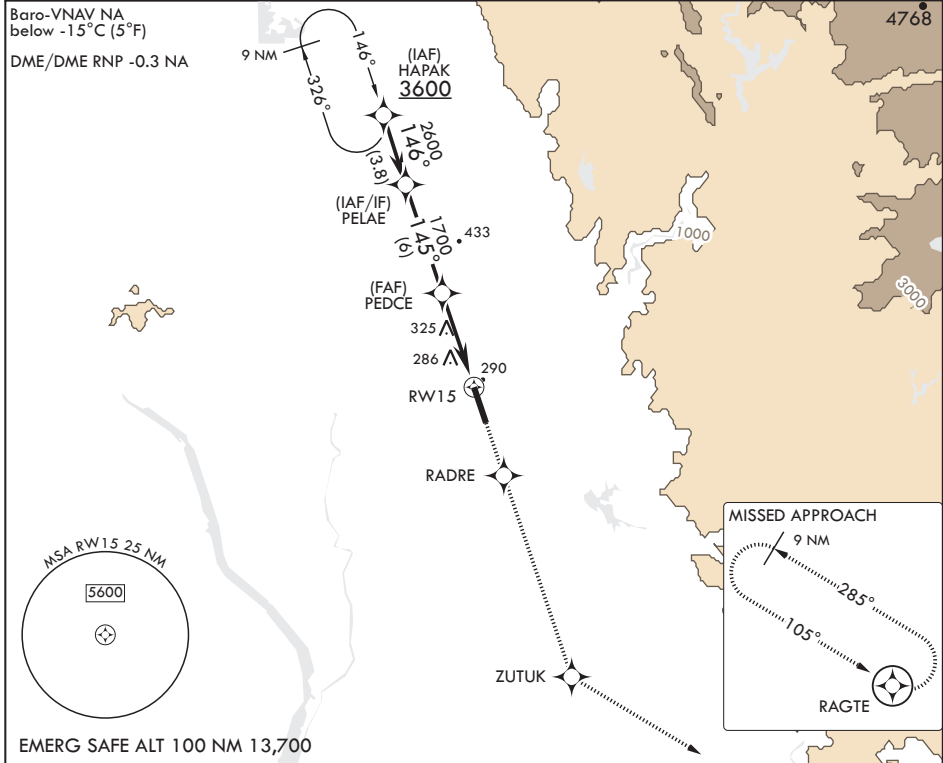
AL-771 (USAF)

BEALE AFB (KBAB)

V * When ALS inop, increase vis to 2 1/2 miles.
 ** When ALS inop, increase CAT AB RVR to 55 and vis to 1 mile, CAT CDE vis to 1 3/8 miles.
 *** Circling not authorized E of Rwy 15-33.

ALS-F1 MISSED APPROACH: Climb direct RADRE, then track 145° to ZUTUK, then turn left and track 105° to RAGTE and hold, maintain 3600.

ATIS* 124.55 273.5	NORCAL APP CON 125.4 259.1	TOWER* 119.4 284.75	GND CON 121.6 257.75
------------------------------	--------------------------------------	-------------------------------	--------------------------------



PELAE 2600 145° GP 2.75° TCH 47 1700 PEDCE † LNAV only † 1.6 NM to RW15 5.2 NM RW15	VGSI and descent angles not coincident.		3600 ↑	RADRE ⬇	tr 145°	ZUTUK ⬇	ELEV 113	THRE 113
CATEGORY	A	B	C	D	E			
LNAV/VNAV DA*	680-1 5/8		567	(600-1 5/8)				
LNAV MDA**	620/24 507 (600-1/2)		620/55	507	(600-1)			
C CIRCLING***	620-1 507 (600-1)	640-1 527 (600-1)	660-1 1/2 547 (600-1 1/2)	680-2 567 (600-2)	840-2 1/2 727 (800-2 1/2)	HIRL Rwy 15-33 33 12001 x 300 219 256 BCN TWR 274		

MARYSVILLE, CALIFORNIA

39°08'N - 121°26'W

BEALE AFB (KBAB)

Amdt 1 20JUL17

RNAV (GPS) RWY 15

SW-2, 16 JUL 2020 to 13 AUG 2020

SW-2, 16 JUL 2020 to 13 AUG 2020