

KUSSO SIX DEPARTURE (RNAV)

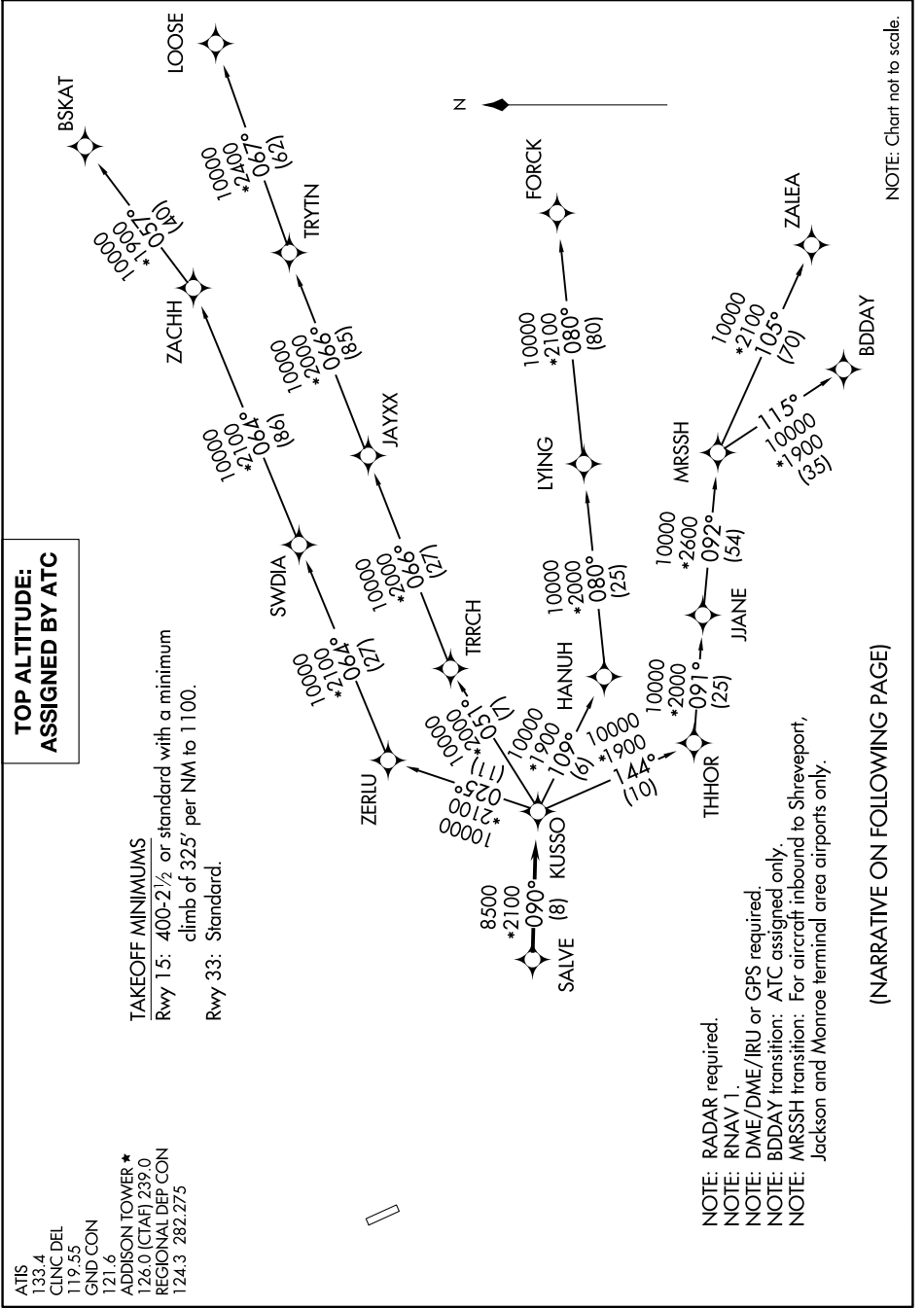
SC-2, 16 JUL 2020 to 13 AUG 2020

TOP ALTITUDE: ASSIGNED BY ATC

TAKEOFF MINIMUMS

Rwy 15: 400-2½ or standard with a minimum climb of 325' per NM to 1100.
Rwy 33: Standard.

ATIS 133.4
CLNC DEL 119.55
GND CON 121.6
ADDISON TOWER * 128.0 (CTAF) 239.0
REGIONAL DEP CON 124.3 282.275



NOTE: Chart not to scale.

(NARRATIVE ON FOLLOWING PAGE)

SC-2, 16 JUL 2020 to 13 AUG 2020