

JOE POOL ONE DEPARTURE

TAKEOFF MINIMUMS

Rwy 33: Standard.

Rwy 15: 400-2½ or standard with minimum climb of 325' per NM to 1100.

ATIS 133.4
 CLNC DEL 119.55
 GND CON 121.6
 ★ ADDISON TOWER 126.0 (CTAF) 239.0
 REGIONAL DEP CON 124.3 282.275

MAVERICK
 113.1 TTT
 Chan 78
 N32°52.15'
 W97°02.43'

WACO
 115.3 ACT
 Chan 100
 N31°39.74'
 W97°16.14'
 L-19, H-6

HOARY
 N30°34.63'
 W97°46.52'
 L-19-21, H-7

CENTEX
 112.8 CWK
 Chan 75

SAN ANTONIO
 116.8 SAT
 Chan 115
 N29°38.64'-W98°27.68'
 L-19, H-7

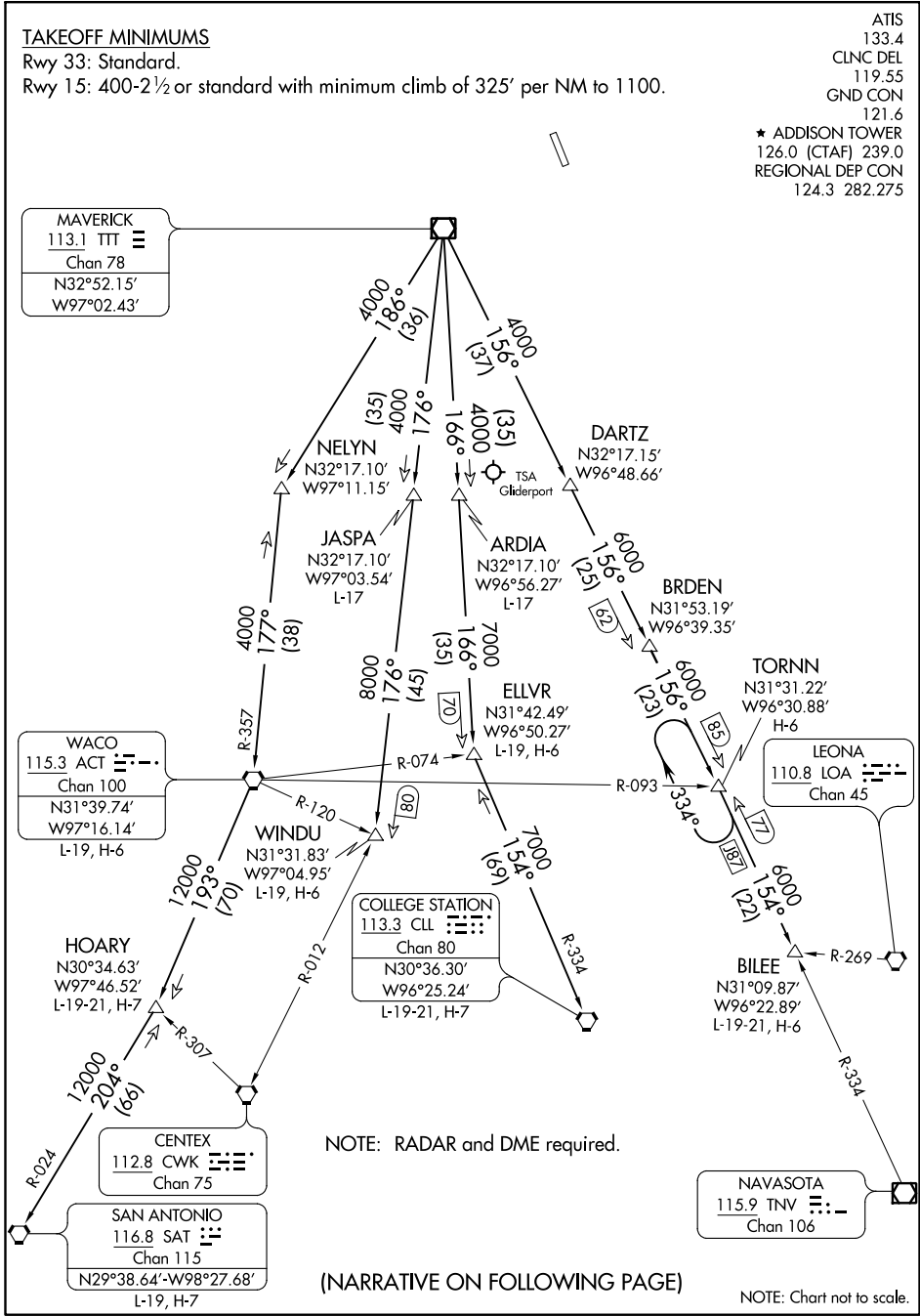
COLLEGE STATION
 113.3 CLL
 Chan 80
 N30°36.30'
 W96°25.24'
 L-19-21, H-7

NOTE: RADAR and DME required.

(NARRATIVE ON FOLLOWING PAGE)

NAVASOTA
 115.9 TNV
 Chan 106

NOTE: Chart not to scale.



SC-2, 16 JUL 2020 to 13 AUG 2020

SC-2, 16 JUL 2020 to 13 AUG 2020

JOE POOL ONE DEPARTURE