

WAAS CH <b>78019</b> <b>W22A</b>	APP CRS <b>221°</b>	Rwy ldg TDZE Apt Elev	<b>5001</b> <b>270</b> <b>288</b>
--	------------------------	-----------------------------	---

# RNAV (GPS) RWY 22

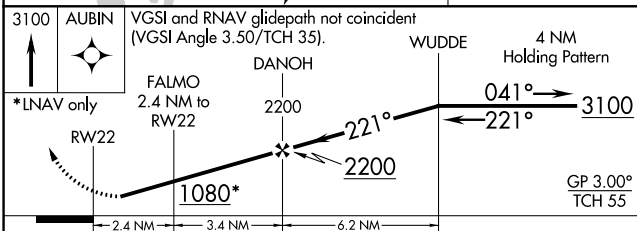
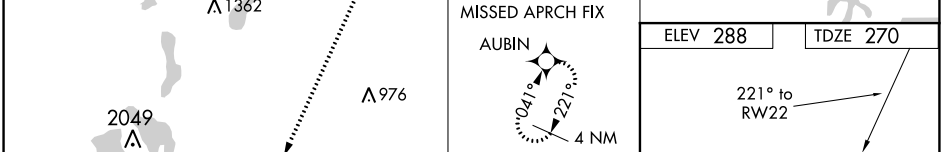
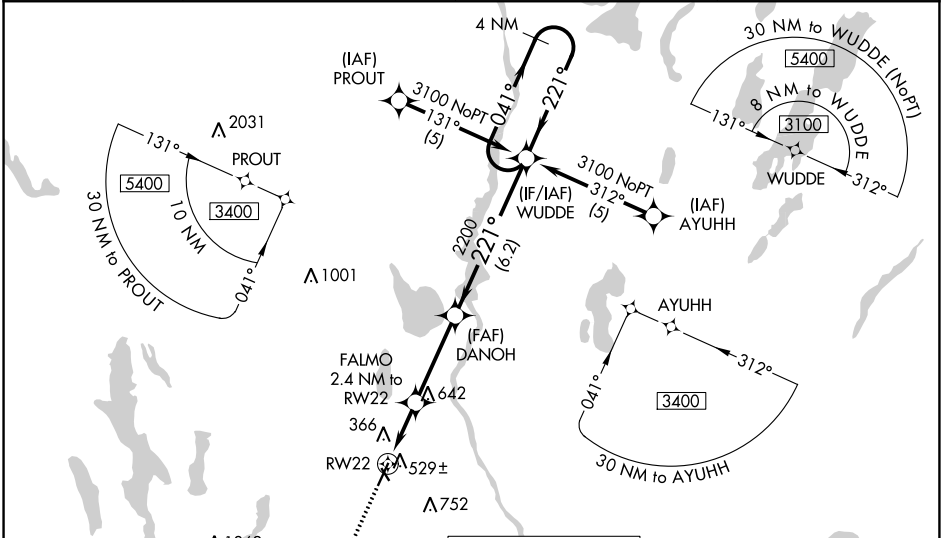
AUBURN/LEWISTON MUNI (LEW)

RNP APCH.

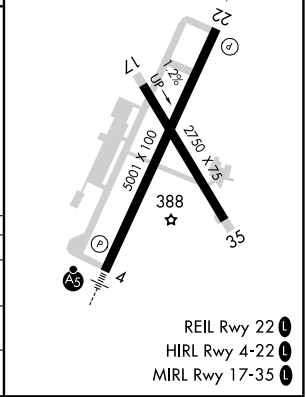
**⚠** Procedure NA at night. For uncompensated Baro-VNAV systems, LNAV/VNAV NA below -15°C or above 48°C. Rwy 22 helicopter visibility reduction below 1 SM NA. When local altimeter setting not received, use Augusta altimeter setting: increase LPV all Cats DA to 617 feet and all Cats visibility ½ SM; LNAV/VNAV all Cats DA to 938 feet and all Cats visibility ½ SM; increase all MDA 80 feet and LNAV Cat C/D visibility ½ SM. Baro-VNAV NA when using Augusta altimeter setting.

MISSED APPROACH: Climb to 3100 direct AUBIN and hold.

AWOS-3PT <b>118.025</b>	PORTLAND APP CON ★ <b>125.5 353.9</b>	PORTLAND CLNC DEL <b>124.05</b>	UNICOM <b>122.8 (CTAF) 0</b>
----------------------------	--	------------------------------------	---------------------------------



CATEGORY	A	B	C	D
LPV DA		546-1	276 (300-1)	
LNAV/VNAV DA		867-2	597 (600-2)	
LNAV MDA	780-1	510 (500-1)	780-1 3/8	510 (500-1 3/8)



NE-1, 16 JUL 2020 to 13 AUG 2020

NE-1, 16 JUL 2020 to 13 AUG 2020